

ENNIS, TEXAS

AL-6830 (FAA)

VORTAC CQY 114.8 Chan 95	APP CRS 285°	Rwy ldg TDZE Apt Elev 492	N/A N/A 492
--	------------------------	---	--

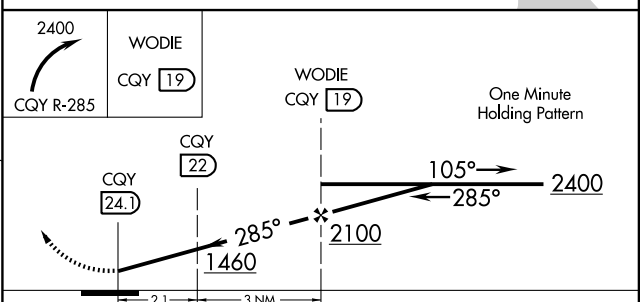
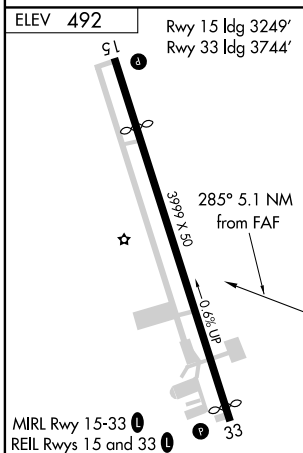
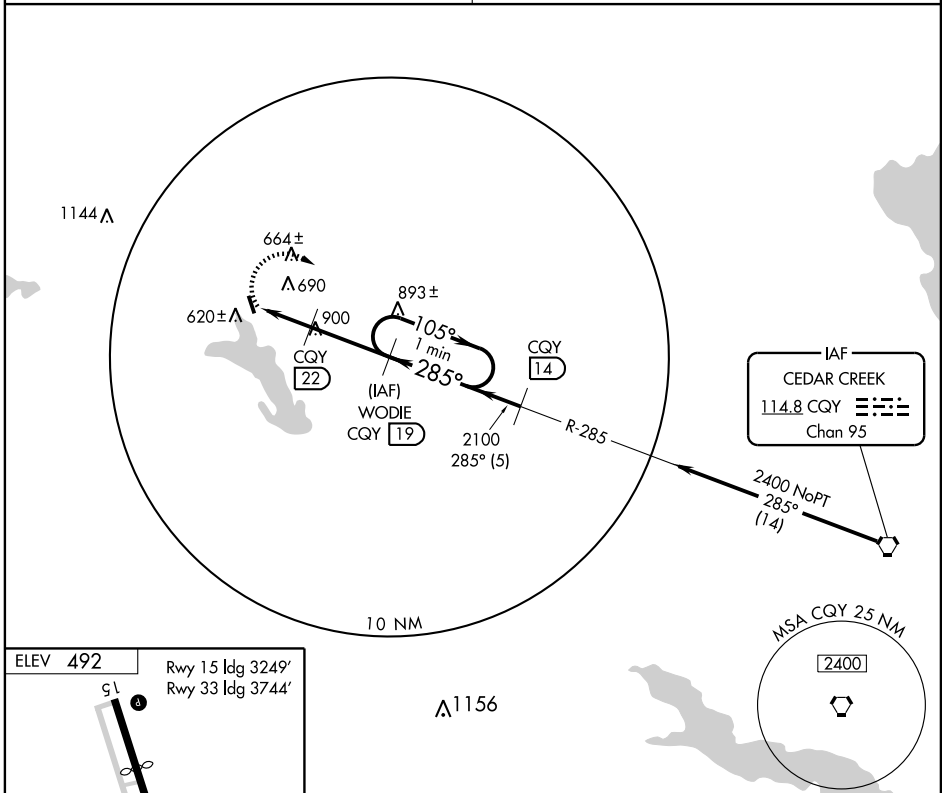
VOR/DME-A

ENNIS MUNI (F41)

<p>▲ NA</p> <p>Use Dallas Love Field altimeter setting.</p>	<p>MISSED APPROACH: Climbing right turn to 2400 via CQY R-285 to WODIE/CQY 19 DME and hold.</p>
<p>REGIONAL APP CON</p> <p>125.2 343.65</p>	<p>(CTAF)</p> <p>122.9 0</p>

SC-2, 19 NOV 2009 to 17 DEC 2009

SC-2, 19 NOV 2009 to 17 DEC 2009



CATEGORY	A	B	C	D
CIRCLING	1020-1 528 (600-1)	1080-1¼ 588 (600-1¼)	1080-1½ 588 (600-1½)	NA

ENNIS, TEXAS
Orig-A 08157

32°20'N-96°40'W

ENNIS MUNI (F41)

VOR/DME-A