

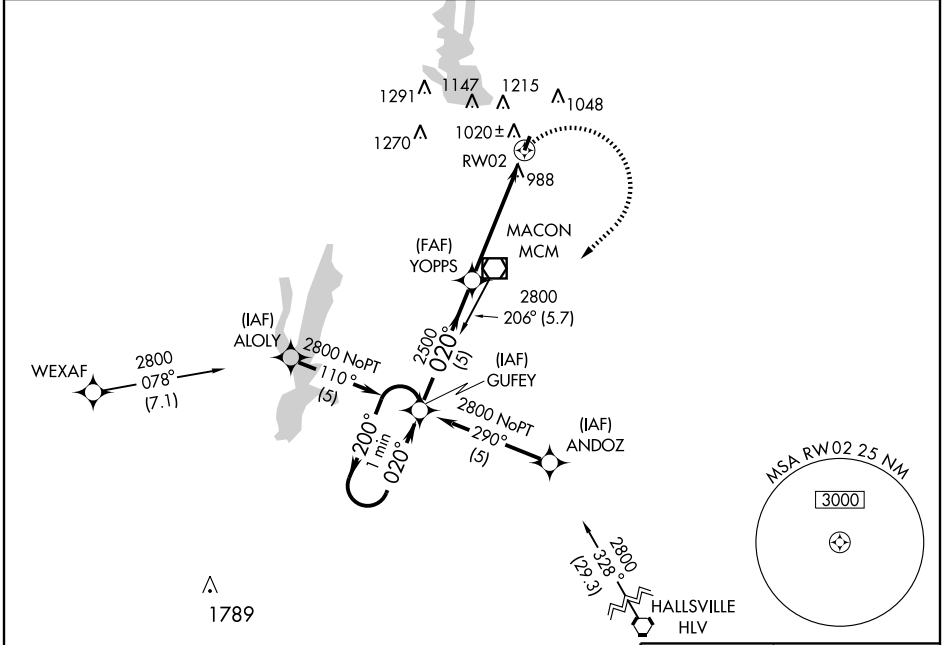
GPS RWY 2
MACON-FOWER MEMORIAL (K89)

APP CRS	Rwy Idg	3300
020°	TDZE	874
	Apt Elev	874

Obtain Moberly altimeter setting on CTAF (122.7); when not received use Columbia altimeter setting.
NA

MISSED APPROACH: Climbing right turn to 2800 direct GUFEY WP and hold.

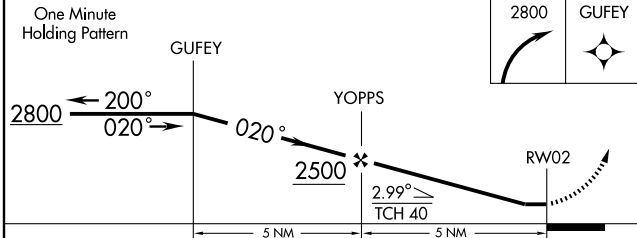
KANSAS CITY CENTER 125.25 381.5	MOBERLY CTAF 122.7	UNICOM 122.8 (CTAF) 0
---	------------------------------	---------------------------------



NC-3, 11 MAR 2010 to 08 APR 2010

NC-3, 11 MAR 2010 to 08 APR 2010

ELEV 874



CATEGORY	A	B	C	D
S-2	1320-1	446 (500-1)	1320-1¼ 446 (500-1¼)	NA
CIRCLING	1420-1 546 (600-1)	1620-1¼ 746 (800-1¼)	1620-2½ 746 (800-2½)	NA
COLUMBIA ALTIMETER SETTING MINIMUMS				
S-2	1420-1	546 (600-1)	1420-1½ 546 (600-1½)	NA
CIRCLING	1520-1 646 (700-1)	1700-1¼ 826 (900-1¼)	1700-2¼ 826 (900-2¼)	NA

