

MACON, MISSOURI

AL-6837 (FAA)

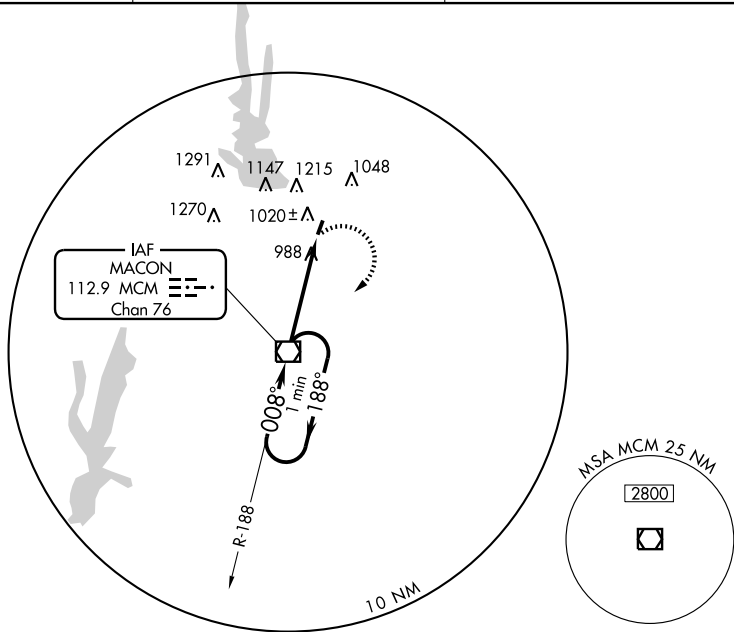
VOR/DME MCM	APP CRS	Rwy Idg	3300
112.9	008°	TDZE	874
Chan 76		Apt Elev	874

VOR RWY 2

MACON-FOWER MEMORIAL (K89)

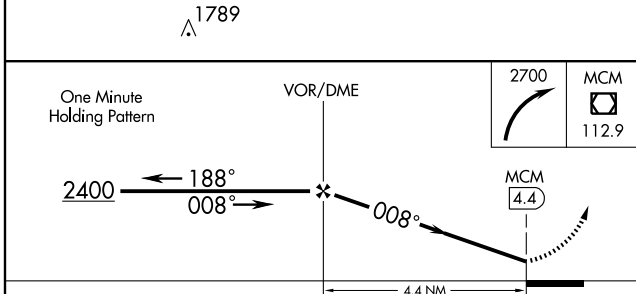
▲NA Obtain Moberly altimeter setting on CTAF (122.7); when not received use Columbia altimeter setting. **MISSED APPROACH:** Climbing right turn to 2700 direct MCM VOR/DME and hold.

KANSAS CITY CENTER 125.25 381.5	MOBERLY CTAF 122.7	UNICOM 122.8 (CTAF) 0
---	------------------------------	---------------------------------

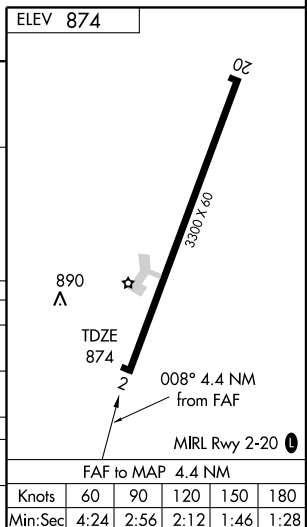


NC-3, 11 MAR 2010 to 08 APR 2010

NC-3, 11 MAR 2010 to 08 APR 2010



CATEGORY	A	B	C	D
S-2	1320-1	446 (500-1)	1320-1¼ 446 (500-1¼)	NA
CIRCLING	1420-1 546 (600-1)	1620-1¼ 746 (800-1¼)	1620-2½ 746 (800-2½)	NA
COLUMBIA ALTIMETER SETTING MINIMUMS				
S-2	1420-1	546 (600-1)	1420-1½ 546 (600-1½)	NA
CIRCLING	1520-1 646 (700-1)	1700-1¼ 826 (900-1¼)	1700-2½ 826 (900-2½)	NA



MACON, MISSOURI
Amdt 1A 04106

39°44'N-92°28'W

MACON-FOWER MEMORIAL (K89)

VOR RWY 2

FAF to MAP 4.4 NM	Knots	60	90	120	150	180
	Min:Sec	4:24	2:56	2:12	1:46	1:28