

METTER, GEORGIA

AL-6844 (FAA)

RNAV (GPS) RWY 28

METTER MUNI (MHP)

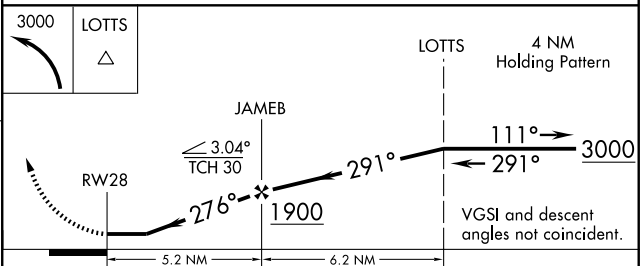
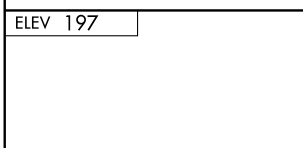
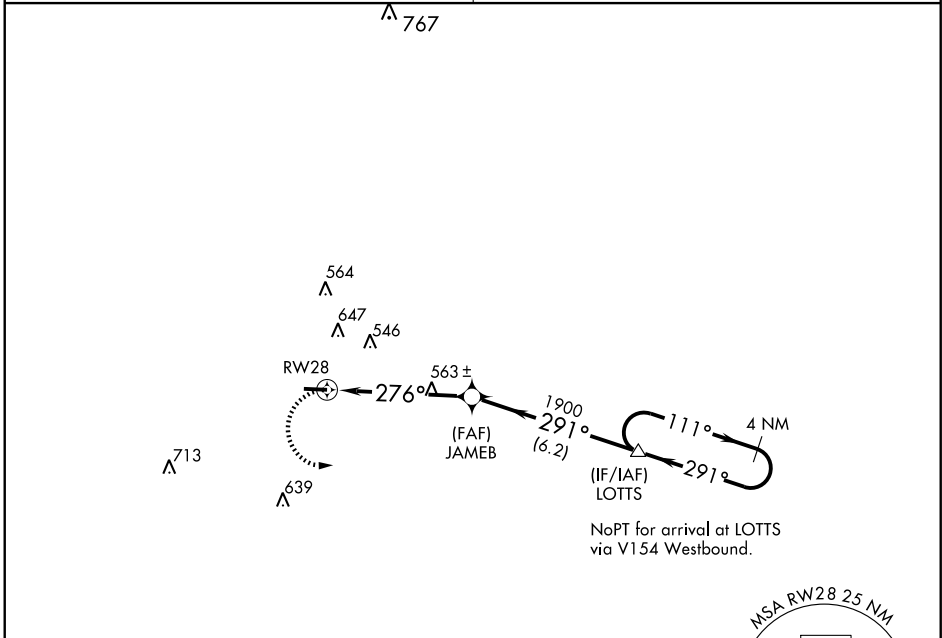
APP CRS 276°	Rwy Idg 5002
	TDZE 197
	Apt Elev 197

▼ Use Claxton altimeter setting: when not received, use Vidalia altimeter setting and increase all MDAs 20 feet, and LNAV and Circling Cat. C visibility ¼ mile. DME/DME RNP-0.3 NA. Visibility reduction by helicopters NA.

MISSED APPROACH: Climbing left turn to 3000 direct LOTS and hold.

JACKSONVILLE CENTER
132.5 363.2

UNICOM
123.0 (CTAF) 0



CATEGORY	A	B	C	D
LNAV MDA	860-1	663 (700-1)	860-1 ³ / ₄ 663 (700-1 ³ / ₄)	NA
CIRCLING	860-1	663 (700-1)	860-1 ³ / ₄ 663 (700-1 ³ / ₄)	NA

METTER, GEORGIA
Orig 09295

32° 22' N - 82° 05' W

RNAV (GPS) RWY 28

SE-4, 11 MAR 2010 to 08 APR 2010

SE-4, 11 MAR 2010 to 08 APR 2010