

DENVER, COLORADO

AL-6851 (FAA)

LOC/DME I-FZR <b>110.9</b> Chan 46	APP CRS <b>169°</b>	Rwy Idg TDZE Apt Elev	<b>8000</b> <b>5488</b> <b>5512</b>
--	------------------------	-----------------------------	---

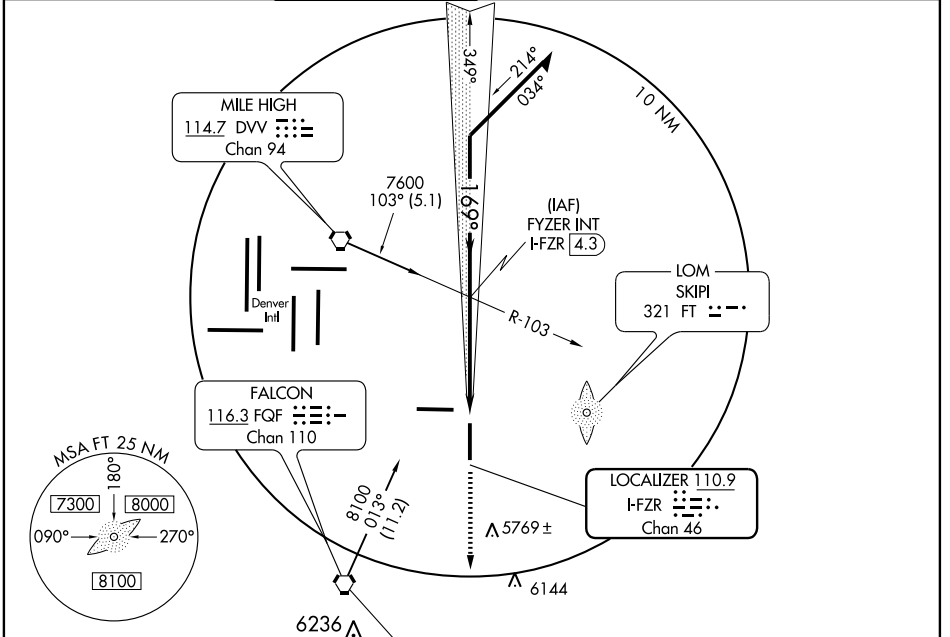
# ILS or LOC RWY 17

DENVER/ FRONT RANGE (F'TG)

**NA** When local altimeter not received use Denver Intl altimeter setting and increase all DH/MDAs 40 feet.

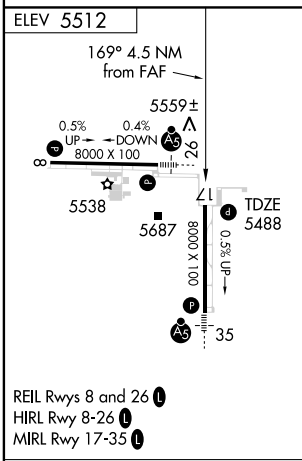
**MISSED APPROACH:** Climb to 6000, continue climbing to 8500 via heading 169° and QGF VORTAC R-127 to HUNTN Int.

ATIS <b>119.025</b>	DENVER APP CON <b>128.25 371.95</b>	FRONT RANGE TOWER* <b>120.2 (CTAF) 0</b>	GND CON <b>124.7</b>	CLNC DEL <b>124.7</b>	DENVER CLNC DEL <b>121.75</b> (When tower closed)	UNICOM <b>122.95</b>
------------------------	--	---	-------------------------	--------------------------	---	-------------------------

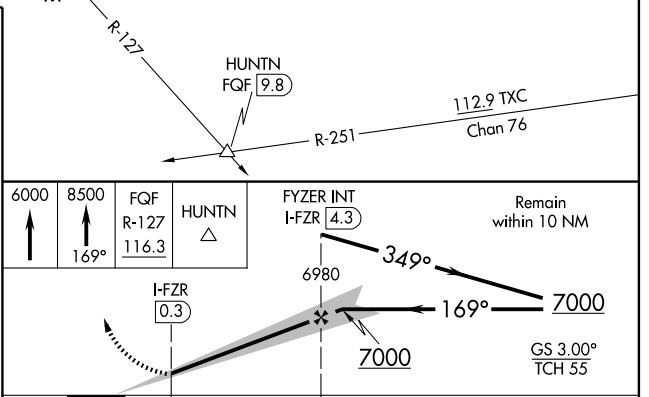


SW-1, 19 NOV 2009 to 17 DEC 2009

SW-1, 19 NOV 2009 to 17 DEC 2009



FAF to MAP 4 NM					
Knots	60	90	120	150	180
Min:Sec	4:00	2:40	2:00	1:36	1:20



CATEGORY	A	B	C	D
S-ILS 17	5688- <sup>3</sup> / <sub>4</sub> 200 (200- <sup>3</sup> / <sub>4</sub> )			
S-LOC 17	5820-1 332 (400-1)			
CIRCLING	5960-1 448 (500-1)	5980-1 468 (500-1)	5980-1 <sup>1</sup> / <sub>2</sub> 468 (500-1 <sup>1</sup> / <sub>2</sub> )	6080-2 568 (600-2)

DENVER, COLORADO  
Orig-A 09183

39°47'N-104°33'W

# DENVER/ FRONT RANGE (F'TG)

## ILS or LOC RWY 17