

LOC/DME I-VVWT 110.9 Chan 46	APP CRS 349°	Rwy Idg 8000 TDZE 5512 Apt Elev 5512
--	------------------------	---

ILS or LOC RWY 35

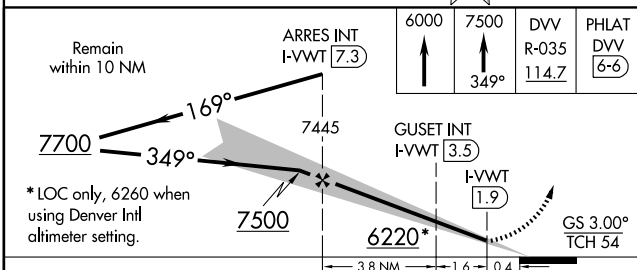
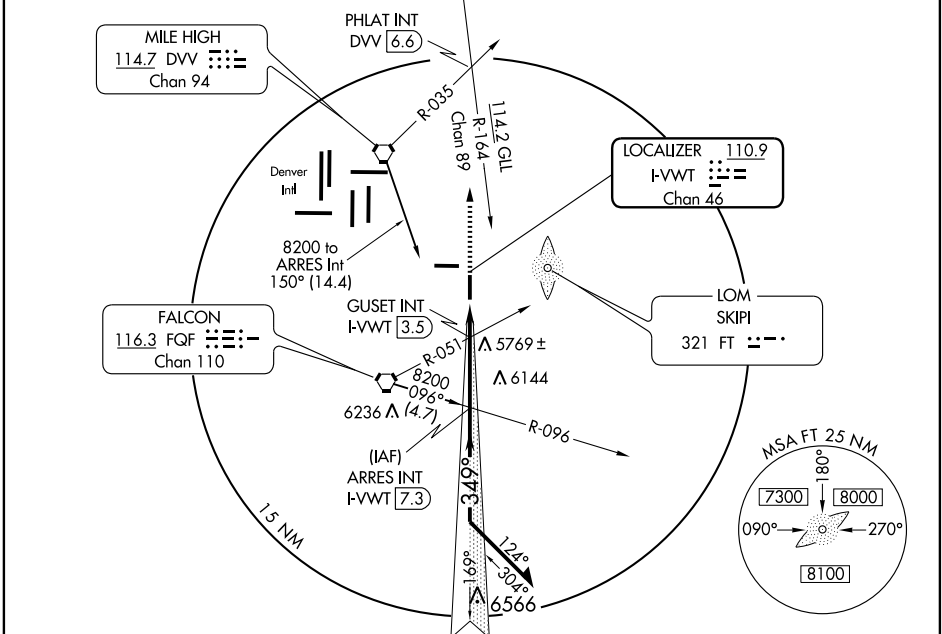
DENVER/ FRONT RANGE (F'TG)

NA If local altimeter not received, use Denver Intl altimeter setting and increase all DH/MDA 40 feet.

MALSR

MISSED APPROACH: Climb to 6000; continue climb to 7500 via heading 349° and DVV VORTAC R-035 to PHLAT Int.

ATIS 119.025	DENVER APP CON 128.25 371.95	FRONT RANGE TOWER* 120.2 (CTAF) 0	GND CON 124.7	CLNC DEL 124.7	DENVER CLNC DEL 121.75 (When tower closed)	UNICOM 122.95
------------------------	--	---	-------------------------	--------------------------	---	-------------------------



CATEGORY	A	B	C	D
S-ILS 35	5712-¾ 200 (200-¾)			
S-LOC 35	6220-1	708 (800-1)	6220-2	6220-2¼
CIRCLING	6220-1	708 (800-1)	6220-2	6220-2¼
GUSET INT/DME MINIMA				
S-LOC 35	6000-1	488 (500-1)	6000-1¼	6000-1½
CIRCLING	6000-1	488 (500-1)	6000-1½	6080-2

Knots	60	90	120	150	180
Min:Sec	5:18	3:32	2:39	2:07	1:46

SW-1, 19 NOV 2009 to 17 DEC 2009

SW-1, 19 NOV 2009 to 17 DEC 2009