

DENVER, COLORADO

AL-6851 (FAA)

NDB RWY 26

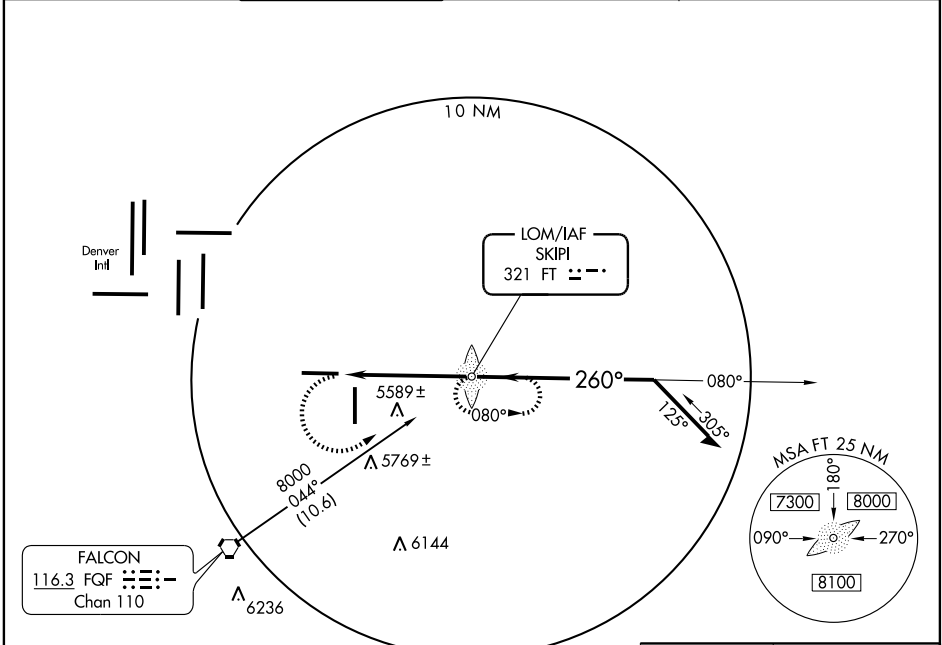
DENVER/FRONT RANGE (F'TG)

LOM FT 321	APP CRS 260°	Rwy Idg TDZE Apt Elev	8000 5485 5512
----------------------	------------------------	-----------------------------	---

NA When local altimeter setting not received use Denver Intl altimeter setting and increase all MDA 40 feet, increase S-26 Cat D visibility to 1/4 .

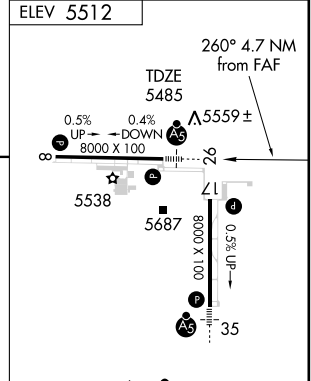
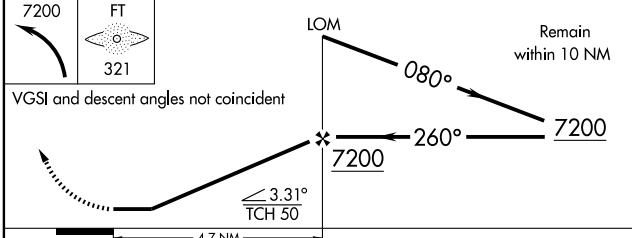
MALSR
AS MISSED APPROACH: Climbing left turn to 7200 direct FT LOM and hold.

ATIS 119.025	DENVER APP CON 128.25 371.95	FRONT RANGE TOWER* 120.2 (CTAF) 0	GND CON 124.7	CLNC DEL 124.7	DENVER CLNC DEL 121.75 (When tower closed)	UNICOM 122.95
------------------------	--	---	-------------------------	--------------------------	---	-------------------------



SW-1, 19 NOV 2009 to 17 DEC 2009

SW-1, 19 NOV 2009 to 17 DEC 2009



CATEGORY	A	B	C	D
S-26	5900-3/4 415 (400-3/4)			5900-1 415 (400-1)
CIRCLING	5960-1 448 (500-1)	5980-1 468 (500-1)	5980-1 1/2 468 (500-1 1/2)	6080-2 568 (600-2)

REIL Rwys 8 and 26	1
HIRL Rwy 8-26	1
MIRL Rwy 17-35	1
FAF to MAP 4.7 NM	
Knots	60 90 120 150 180
Min:Sec	4:42 3:08 2:21 1:53 1:34

DENVER, COLORADO
Amdt 4 09127

39°47'N-104°33'W

DENVER/FRONT RANGE (F'TG)
NDB RWY 26