

DENVER, COLORADO

AL-6851 (FAA)

WAAS CH 82209 W17A	APP CRS 169°	Rwy Idg TDZE Apt Elev	8000 5488 5512
--	------------------------	-----------------------------	---

RNAV (GPS) RWY 17

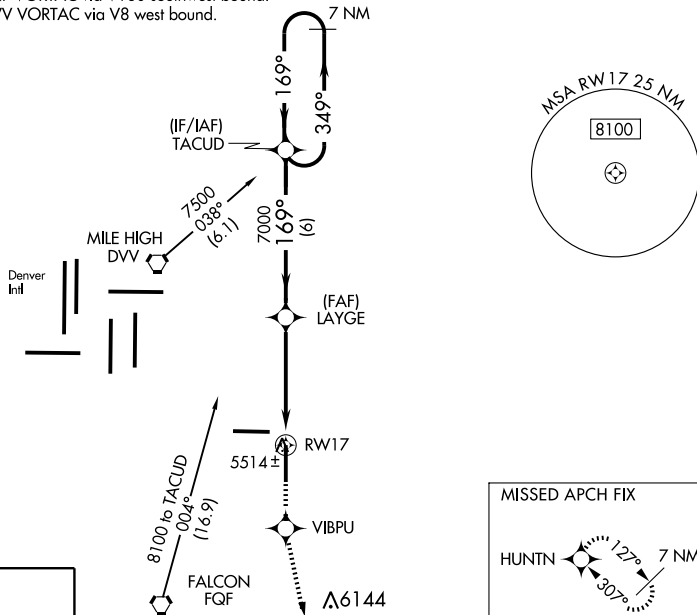
DENVER/FRONT RANGE (F'TG)

V DME/DME RNP -0.3 NA. For uncompensated Baro-VNAV systems, LNAV/VNAV NA below -26°C (-14°F) or above 37°C (98°F).
NA When local altimeter setting not received use Denver Intl altimeter setting and increase all DA 29 feet and all MDA 40 feet. Increase LNAV visibility Cat D to 1½ mile: Baro-VNAV and VDP NA when using Denver Intl altimeter setting.

MISSED APPROACH: Climb to 8500 direct VIBPU and via 157° track to HUNTN and hold.

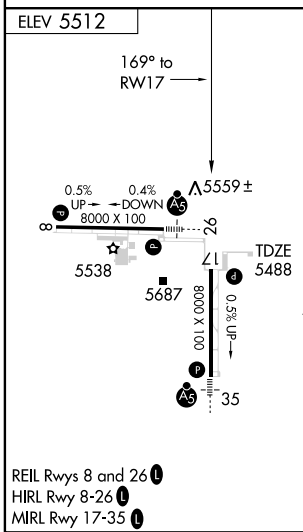
ATIS 119.025	DENVER APP CON 128.25 371.95	FRONT RANGE TOWER * 120.2 (CTAF)	GND CON 124.7	CLNC DEL 124.7	DENVER CLNC DEL 121.75 (When tower closed)	UNICOM 122.95
------------------------	--	--	-------------------------	--------------------------	---	-------------------------

Procedure NA for arrivals at FQF VORTAC via V160 southwest bound.
 Procedure NA for arrivals at DVV VORTAC via V8 west bound.



SW-1, 19 NOV 2009 to 17 DEC 2009

SW-1, 19 NOV 2009 to 17 DEC 2009



7 NM Holding Pattern	TACUD	LAYGE	8500	VIBPU	157° track	HUNTN
	<p>↑ 8500 VIBPU 157° track HUNTN</p> <p>1.2 NM to *RWY17</p> <p>LNAV only*</p>					
7000	← 349°	← 169°	7000	→ 169°	→ 157°	→ 157°
°GS 3.00 TCH 50						
6 NM 3.4 NM 1.2 NM						
CATEGORY	A	B	C	D		
LPV DA	5738-1		250 (300-1)			
LNAV/ VNAV DA	5839-1¼		351 (400- 1¼)			
LNAV MDA	5900-1	412 (500-1)	5900-1¼	5900-1¼		
			412 (500-1¼)	412 (500-1¼)		
CIRCLING	5960-1	5980-1	5980-1½	6080-2		
	448 (500-1)	468 (500-1)	468 (500-1½)	568 (600-2)		

DENVER, COLORADO
 Orig 09015

39°37'N-104°33'

DENVER/ FRONT RANGE (F'TG) RNAV (GPS) RWY 17