

RNAV (GPS) RWY 26

DENVER/ FRONT RANGE (F'TG)

WAAS CH 93909 W26A	APP CRS 260°	Rwy Idg 8000 TDZE 5485 Apt Elev 5512
--	------------------------	---

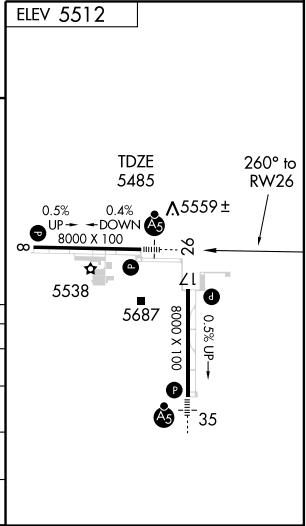
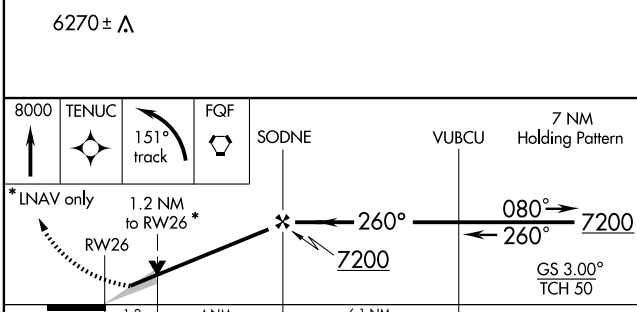
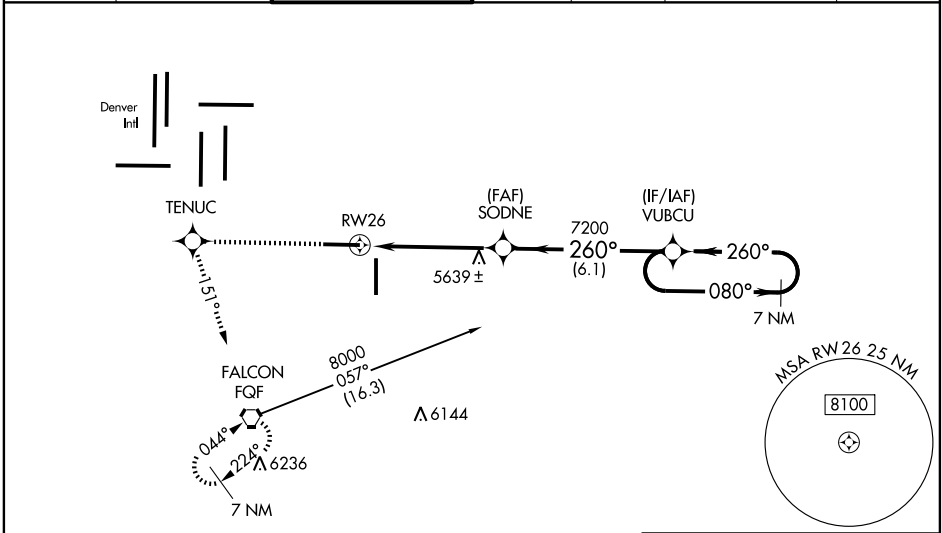
NA DME/DME RNP -0.3 NA. For uncompensated Baro-VNAV systems, LNAV/VNAV NA below -26°C (-14°F) or above 38° C (100°F). When local altimeter setting not received, use Denver Intl altimeter setting and increase all DA 29 feet and all MDA 40 feet, increase LNAV/VNAV visibility Cat A, B, C to 3/4 mile. For inoperative MALSR increase LNAV/VNAV visibility Cat D to 1 mile, LNAV visibility Cat D to 1 1/2 mile. For inoperative MALSR when using Denver Intl altimeter setting increase LPV visibility all Cats to 1 mile, LNAV/VNAV visibility all Cats to 1 1/2 mile. Baro-VNAV and VDP NA when using Denver Intl altimeter setting.

MALSR
MISSED APPROACH: Climb to 8000 direct TENUC and left turn via 151° track to FQF VORTAC and hold. Continue climb-in-hold to 8000.

ATIS 119.025	DENVER APP CON 128.25 371.95	FRONT RANGE TOWER* 120.2 (CTAF)	GND CON 124.7	CLNC DEL 124.7	DENVER CLNC DEL 121.75 (When tower closed)	UNICOM 122.95
------------------------	--	---	-------------------------	--------------------------	---	-------------------------

SW-1, 19 NOV 2009 to 17 DEC 2009

SW-1, 19 NOV 2009 to 17 DEC 2009



CATEGORY	A	B	C	D
LPV DA	5735-1/2 250 (300-1/2)			
LNAV/VNAV DA	5786-1/2 301 (300-1/2)		5786-3/4 301 (300-3/4)	
LNAV MDA	5900-1/2 415 (500-1/2)	5900-3/4 415 (500-3/4)	5900-1 415 (500-1)	5900-1 415 (500-1)
CIRCLING	5960-1 448 (500-1)	5980-1 468 (500-1)	5980-1 1/2 468 (500-1 1/2)	6080-2 568 (600-2)