

DENVER, COLORADO

AL-6851 (FAA)

LOC/DME I-FTG 109.3 Chan 30	APP CRS 260°	Rwy Idg 8000 TDZE 5485 Apt Elev 5512
---	------------------------	---

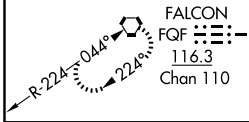
ILS or LOC RWY 26

DENVER/FRONT RANGE (F'TG)

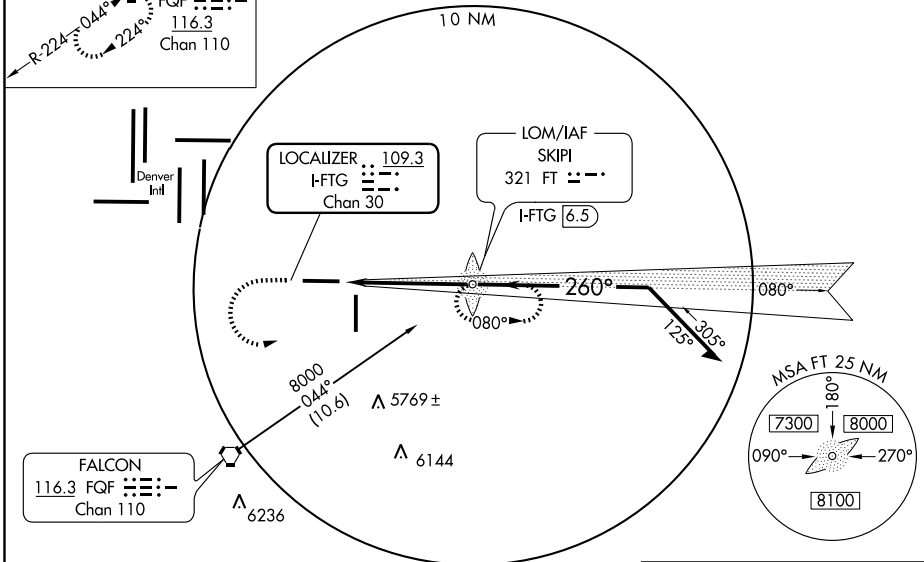
<p>When local altimeter setting not received use Denver Intl altimeter setting and increase all DA 29 feet and all MDA 40 feet, increase S-LOC visibility Cat C to 3/4 mile. VDP NA when using Denver Intl altimeter setting. ADF required</p>		<p>MISSED APPROACH: Climb to 6000 then climbing left turn to 7200 direct SKIPI LOM/ I-FTG 6.5 DME and hold.</p>

ATIS 119.025	DENVER APP CON 128.25 371.95	FRONT RANGE TOWER* 120.2 (CTAF) 0	GND CON 124.7	CLNC DEL 124.7	DENVER CLNC DEL 121.75 (When tower closed)	UNICOM 122.95
------------------------	--	---	-------------------------	--------------------------	---	-------------------------

ALTERNATE MISSED APCH FIX

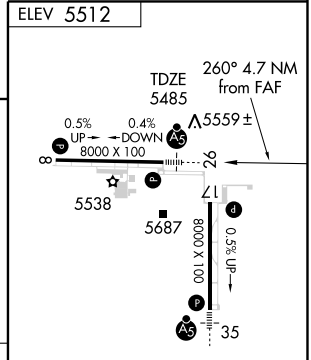
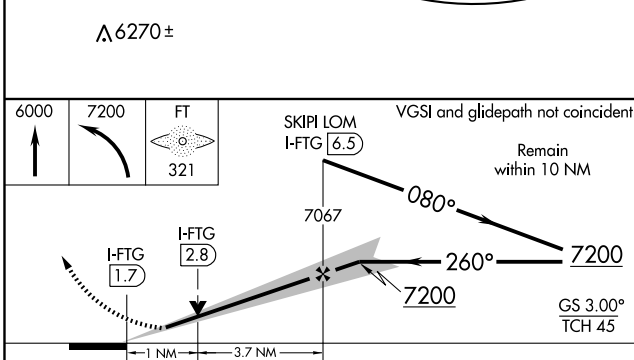


ADF or DME REQUIRED



SW-1, 19 NOV 2009 to 17 DEC 2009

SW-1, 19 NOV 2009 to 17 DEC 2009



CATEGORY	A	B	C	D
S-ILS 26	5685-1/2 200 (200-1/2)			
S-LOC 26	5860-1/2 375 (400-1/2)		5860-3/4 375 (400-3/4)	
CIRCLING	5960-1 448 (500-1)	5980-1 468 (500-1)	5980-1 1/2 468 (500-1 1/2)	6080-2 568 (600-2)

REIL Rwy 8 and 26	
HIRL Rwy 8-26	
MIRL Rwy 17-35	
FAF to MAP 4.7 NM	
Knots	60 90 120 150 180
Min:Sec	4:42 3:08 2:21 1:53 1:34

DENVER, COLORADO
Amdt 4A 09015

39°47'N-104°33'W

ILS or LOC RWY 26

DENVER/FRONT RANGE (F'TG)