


RNAV (GPS) RWY 22

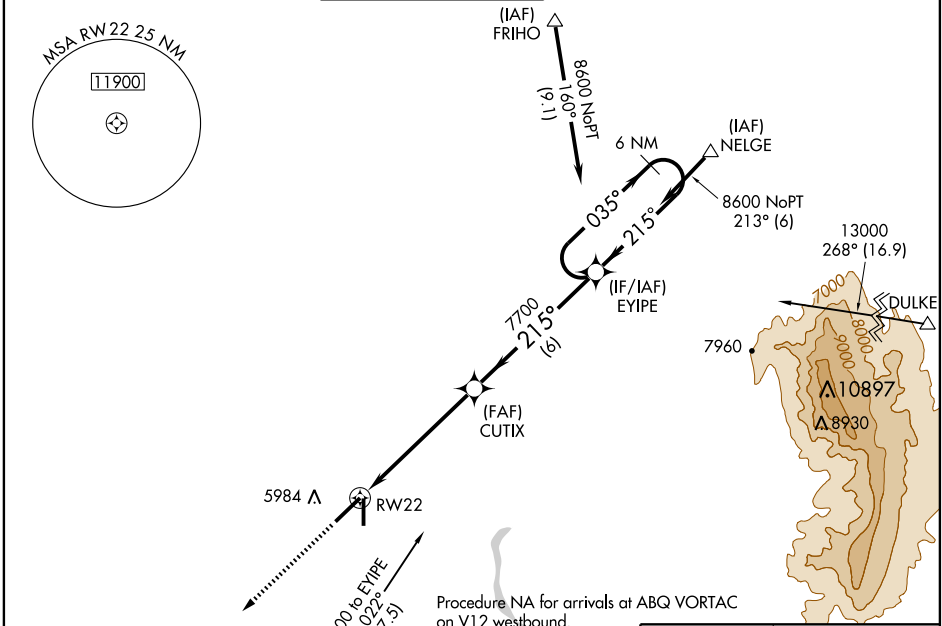
ALBUQUERQUE/DOUBLE EAGLE II (A/E/G)

APP CRS 215°	Rwy Idg 7398
	TDZE 5817
	Apt Elev 5837

▽ Baro-VNAV NA below -26°C (-1.5°F).
△ NA DME/DME RNP-0.3 NA.
W For inoperative MALS, increase LNAV Cat. D visibility to 1¼ and LNAV/VNAV Cat D to 1.

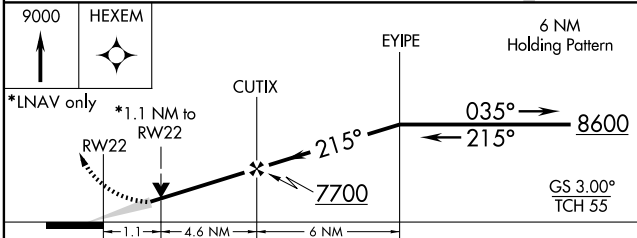
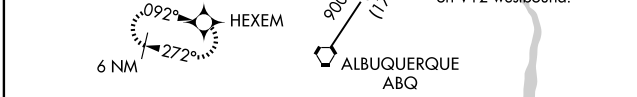
MALS
 MISSED APPROACH: Climb to 9000 direct HEXEM WP and hold.

AWOS-3 119.025	ALBUQUERQUE APP CON 127.4 253.5	DOUBLE EAGLE II TOWER * 120.15 (CTAF) 0	GND CON 121.625	ALBUQUERQUE CLNC DEL 124.8
--------------------------	---	---	---------------------------	--------------------------------------

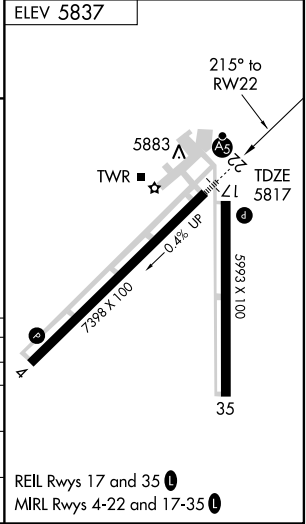


SW-1, 19 NOV 2009 to 17 DEC 2009

SW-1, 19 NOV 2009 to 17 DEC 2009



CATEGORY	A	B	C	D
GLS PA DA	NA			
LNAV/VNAV DA	6140-½	323 (400-½)		6140-¾ 323 (400-¾)
LNAV MDA	6200-½	383 (400-½)		6200-1 383 (400-1)
CIRCLING	6400-1	563 (600-1)	6400-1½ 563 (600-1½)	6400-2 563 (600-2)



REIL Rwy 17 and 35
 MIRL Rwy 4-22 and 17-35