

MONTEZUMA, GEORGIA

AL-6862 (FAA)

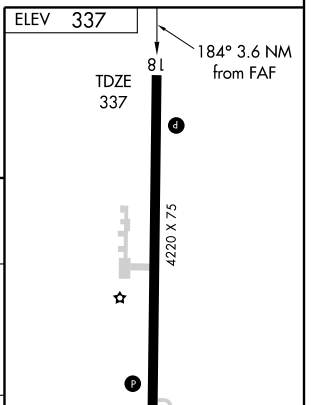
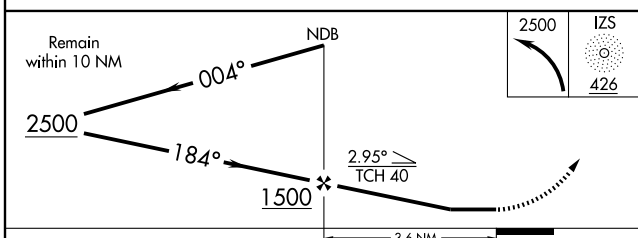
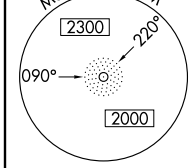
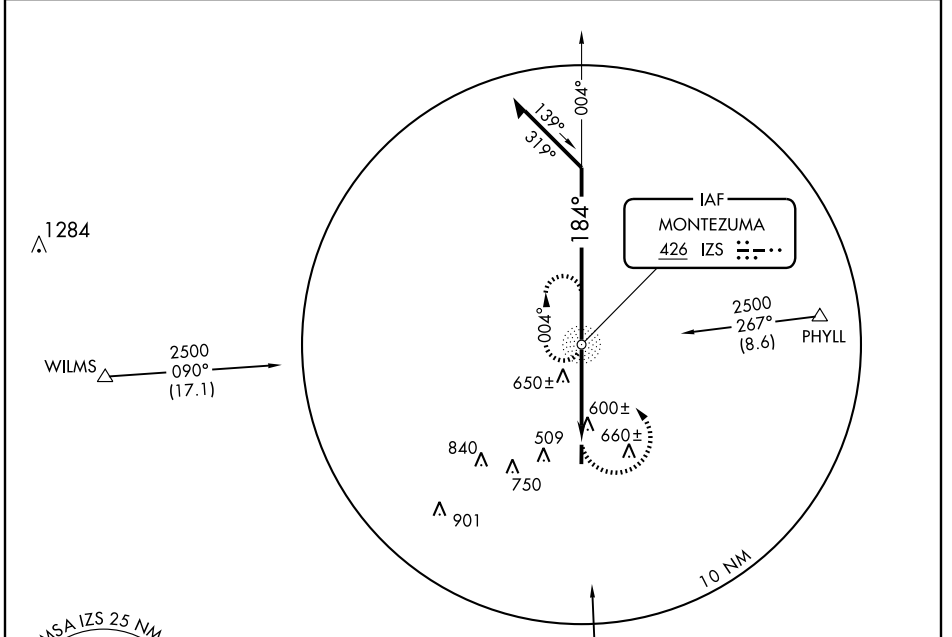
NDB RWY 18

MONTEZUMA/ DR. C. P. SAVAGE SR. (53A)

NDB IZS 426	APP CRS 184°	Rwy Idg 4220
		TDZE 337
		Apt Elev 337

NA Use Americus altimeter setting; if not received use Macon altimeter setting and increase all MDAs 20 feet. MISSED APPROACH: Climbing left turn to 2500 direct IZS NDB and hold.

ATLANTA APP CON★ 124.2 279.6	CTAF 122.9
--	----------------------



CATEGORY	A	B	C	D
S-18	1020-1	683 (700-1)	1020-2 683 (700-1)	NA
CIRCLING	1020-1	683 (700-1)	1020-2 683 (700-1)	NA

FAF to MAP 3.6 NM					
Knots	60	90	120	150	180
Min:Sec	3:36	2:24	1:48	1:26	1:12

MONTEZUMA, GEORGIA
Amdt 2 09183

32°18'N - 84°00'W

MONTEZUMA/ DR. C. P. SAVAGE SR. (53A)
NDB RWY 18

SE-4, 11 MAR 2010 to 08 APR 2010

SE-4, 11 MAR 2010 to 08 APR 2010