

FALMOUTH, KENTUCKY

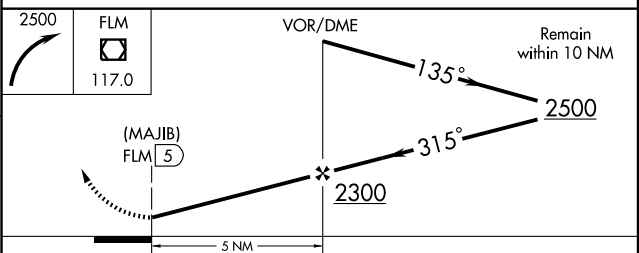
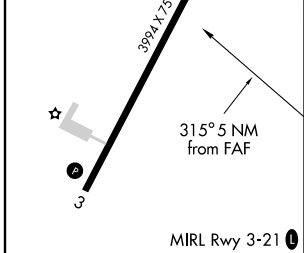
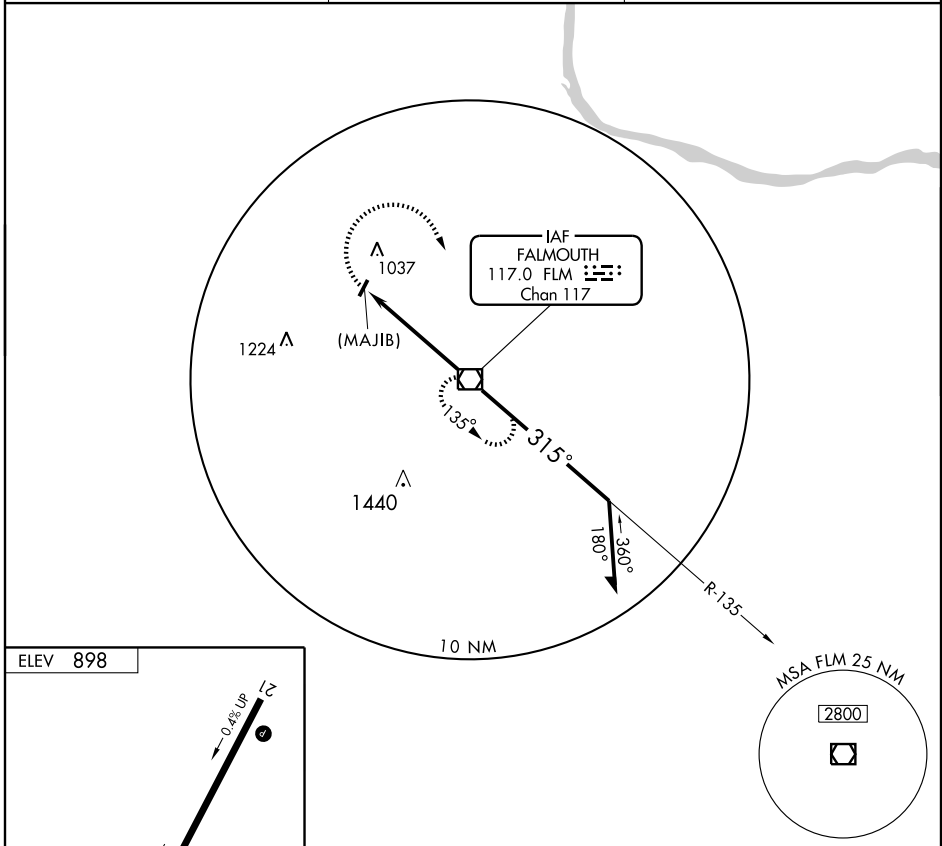
AL-6864 (FAA)

VOR/DME FLM <b>117.0</b> Chan <b>117</b>	APP CRS <b>315°</b>	Rwy Idg TDZE Apt Elev	<b>N/A</b> <b>N/A</b> <b>898</b>
--	------------------------	-----------------------------	--

**VOR or GPS-A**  
FALMOUTH/GENE SNYDER (K62)

<b>NA</b> Use Cincinnati/Northern Kentucky Intl altimeter setting.	MISSED APPROACH: Climbing right turn to 2500 direct FLM VOR/DME and hold.
--	---

CINCINNATI APP CON <b>121.0 257.725</b>	UNICOM <b>122.7</b> (CTAF)	<b>122.9</b> <b>0</b>
--	-------------------------------	-----------------------



FAF to MAP 5 NM						
Knots	60	90	120	150	180	
Min:Sec	5:00	3:20	2:30	2:00	1:40	
CATEGORY	A		B		C	D
CIRCLING	1500-1		602 (700-1)		1500-1¾ 602 (700-1¾)	1500-2 602 (700-2)

FALMOUTH, KENTUCKY  
Amdt 2A 07270

38° 42'N-84° 24'W

FALMOUTH/GENE SNYDER (K62)  
**VOR or GPS-A**

SE-1, 19 NOV 2009 to 17 DEC 2009

SE-1, 19 NOV 2009 to 17 DEC 2009