

PRAGUE, OKLAHOMA

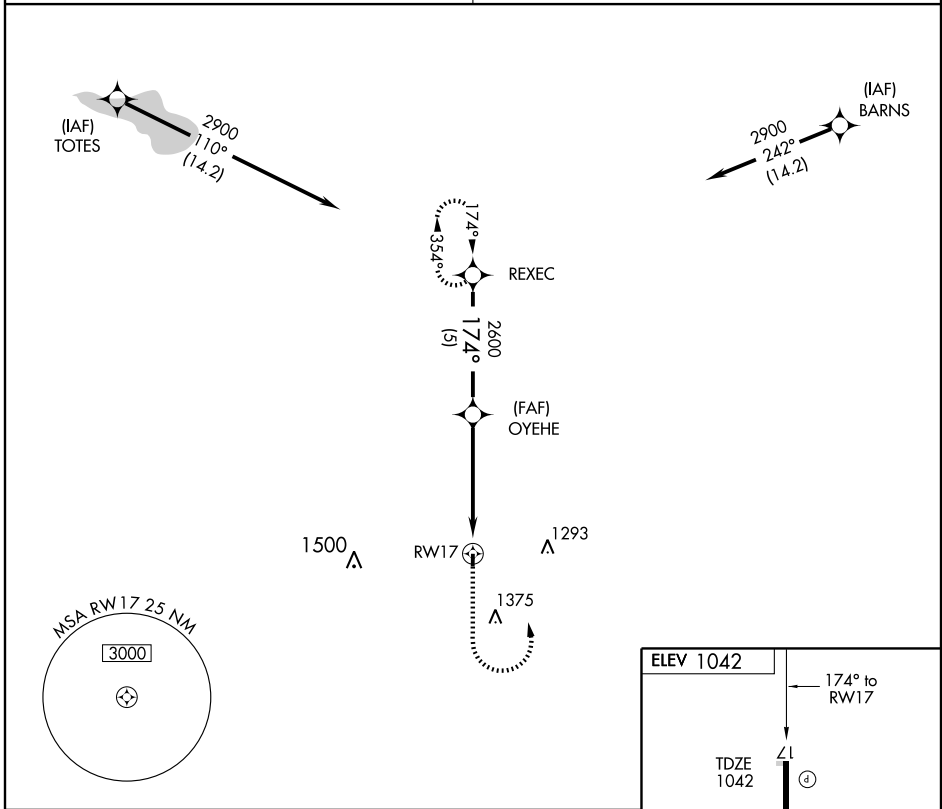
AL-6872 (FAA)

GPS RWY 17

PRAGUE MUNI (O47)

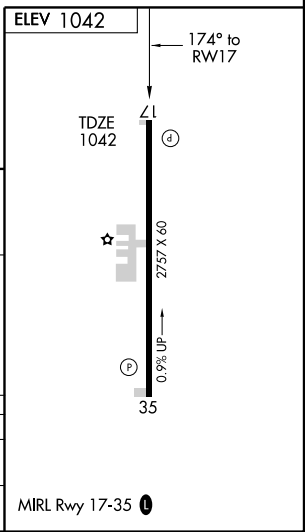
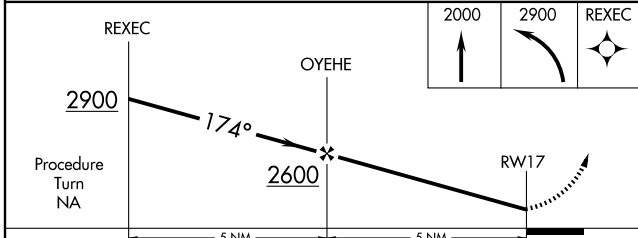
APP CRS 174°	Rwy Idg 2757
	TDZE 1042
	Apt Elev 1042

▲ NA	Use Oklahoma City/Will Rogers World altimeter setting.	MISSED APPROACH: Climb to 2000 then climbing left turn to 2900 direct REXEC and hold.
FORT WORTH CENTER 132.2 338.35		CTAF 122.9 0



SC-1, 11 MAR 2010 to 08 APR 2010

SC-1, 11 MAR 2010 to 08 APR 2010



CATEGORY	A	B	C	D
S-17	1660-1	618 (700-1)	1660-1¾ 618 (700-1¾)	NA
CIRCLING	1660-1	618 (700-1)	1660-1¾ 618 (700-1¾)	NA

PRAGUE, OKLAHOMA
Orig 08213

35°29'N-96°43'W

GPS RWY 17