

VORTAC GNV <b>116.2</b> Chan <b>109</b>	APP CRS <b>057°</b>	Rwy Idg <b>5044</b> TDZE <b>190</b> Apt Elev <b>196</b>
---	------------------------	---

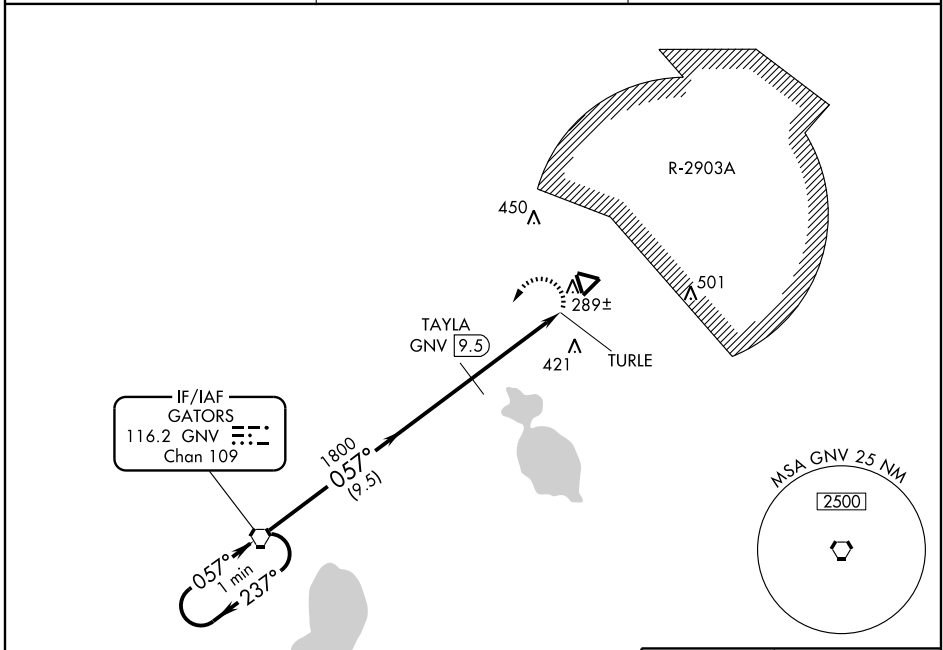
# VOR/DME RWY 5

KEYSTONE AIRPARK (42J)

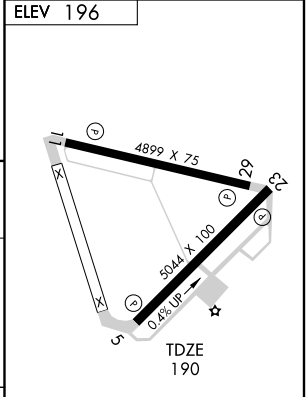
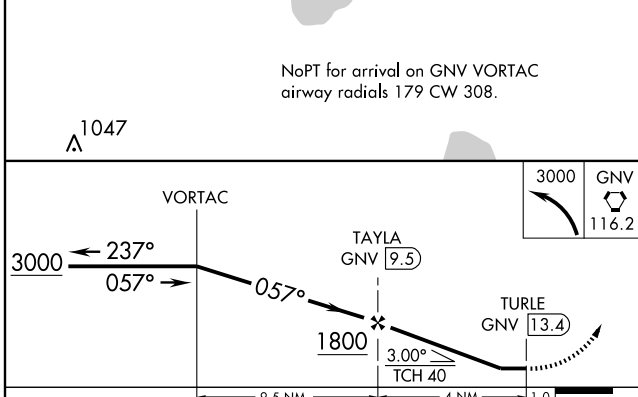
**NA** Visibility reduction by helicopters NA. Circling NA for Cats. B and C NE of Rwy 11-29. When local altimeter setting not received use Gainesville altimeter setting and increase all MDA 60 feet; increase S-5 Cat. C visibility 1/4 mile.

MISSED APPROACH: Climbing left turn to 3000 direct GNV VORTAC and hold.

AWOS-3 <b>124.275</b>	JACKSONVILLE APP CON <b>118.175 338.25</b>	UNICOM <b>122.7 (CTAF)</b>
--------------------------	---	-------------------------------



NoPT for arrival on GNV VORTAC airway radials 179 CW 308.



CATEGORY	A	B	C	D
S-5	680-1 1/4	490 (500-1 1/4)		NA
CIRCLING	680-1 1/4	484 (500-1 1/4)	680-1 1/2 484 (500-1 1/2)	NA

REIL Rwy 11  
MIRL Rwy 5-23  
HIRL Rwy 11-29

SE-3, 19 NOV 2009 to 17 DEC 2009

SE-3, 19 NOV 2009 to 17 DEC 2009