

# RNAV (GPS) RWY 5

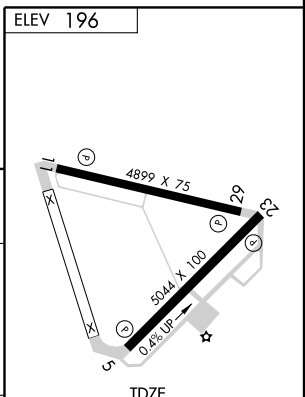
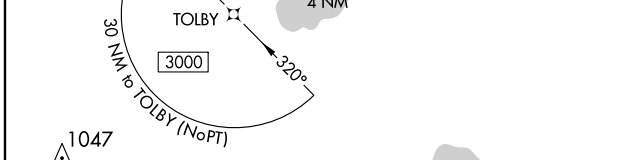
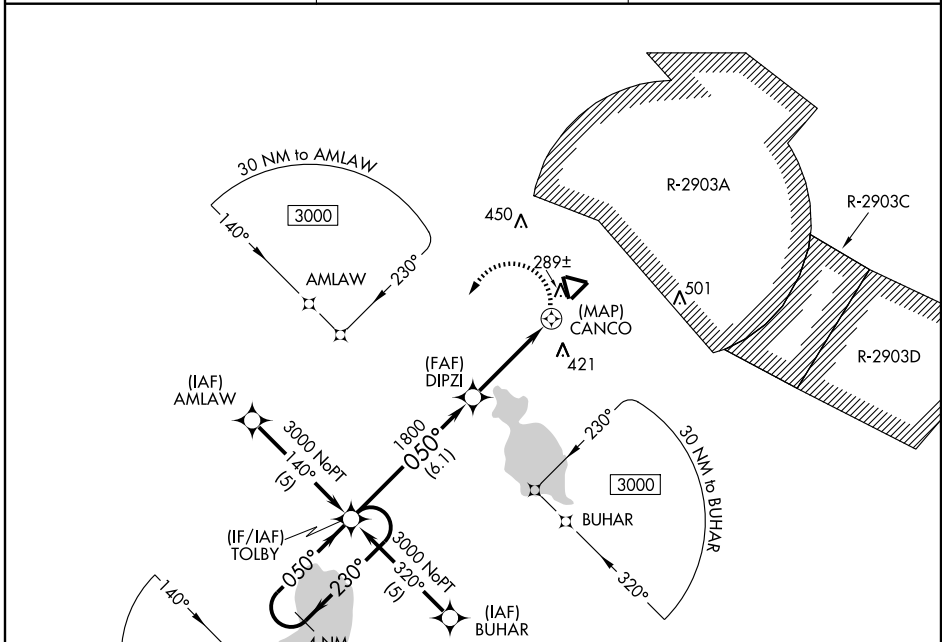
KEYSTONE AIRPARK (42J)

APP CRS	Rwy Idg	<b>5044</b>
<b>050°</b>	TDZE	<b>190</b>
	Apt Elev	<b>196</b>

**▽** DME/DME RNP-0.3 NA. Visibility reduction by helicopters NA. Circling NA for Cats. B and C NE of Rwy 11-29. When local altimeter setting not received, use Gainesville altimeter setting and increase all MDA 60 feet.

**MISSED APPROACH:**  
Climbing left turn to 3000 direct TOLBY and hold.

AWOS-3 <b>124.275</b>	JACKSONVILLE APP CON <b>118.175 338.25</b>	UNICOM <b>122.7 (CTAF) 0</b>
--------------------------	---	---------------------------------



CATEGORY	A	B	C	D
LNVA MDA	600-1¼ 410 (500-1¼)			NA
CIRCLING	620-1¼ 424 (500-1¼)	660-1¼ 464 (500-1¼)	660-1½ 464 (500-1½)	NA

REIL Rwy 11  
MIRL Rwy 5-23 0  
HIRL Rwy 11-29 0

SE-3, 19 NOV 2009 to 17 DEC 2009

SE-3, 19 NOV 2009 to 17 DEC 2009