

BURLINGTON, COLORADO

AL-6895 (FAA)

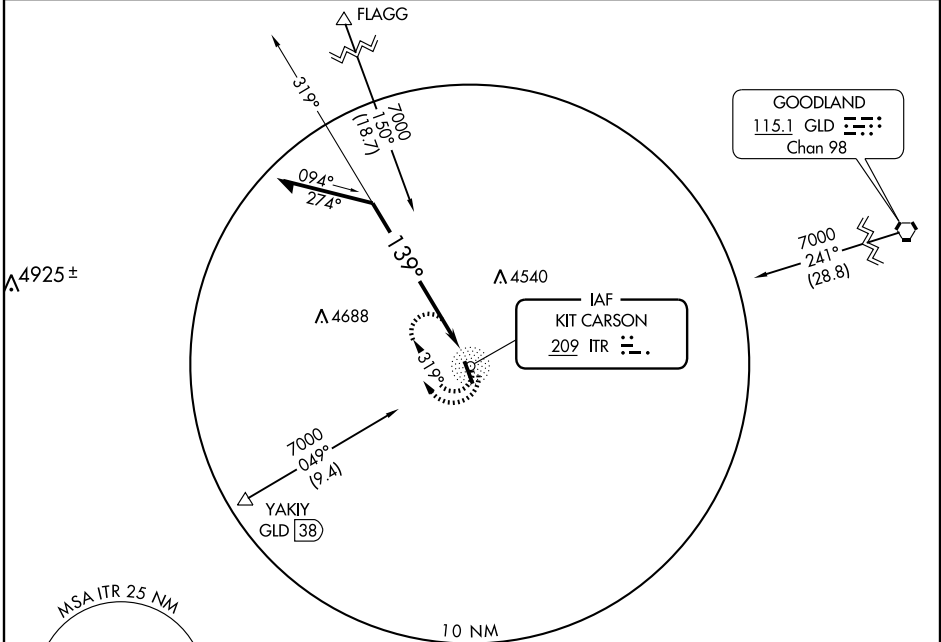
NDB RWY 15

BURLINGTON/KIT CARSON COUNTY (ITR)

NDB ITR 209	APP CRS 139°	Rwy Idg TDZE Apt Elev	5201 4217 4217
-----------------------	------------------------	-----------------------------	---

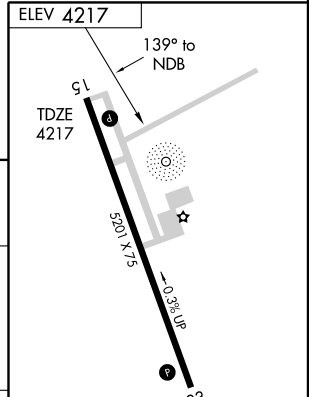
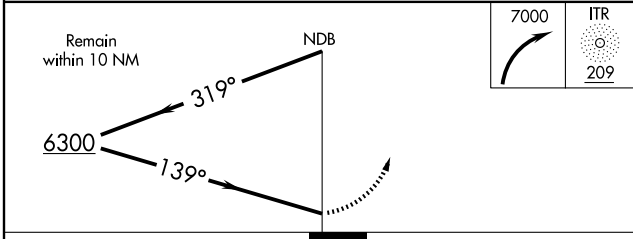
▲ NA	MISSED APPROACH: Climbing right turn to 7000 in ITR NDB holding pattern.
------	--

ASOS 135.225	DENVER CENTER 132.5 379.15	UNICOM 122.8 (CTAF) ①
------------------------	--------------------------------------	---------------------------------



SW-1, 11 MAR 2010 to 08 APR 2010

SW-1, 11 MAR 2010 to 08 APR 2010



CATEGORY	A	B	C	D	MIRL Rwy 15-33 ①	REIL Rwy 15-33 ①
S-15	4820-1	603 (700-1)	4820-1¾ 603 (700-1¾)	4820-2 603 (700-2)		
CIRCLING	4820-1	603 (700-1)	4820-1¾ 603 (700-1¾)	4820-2 603 (700-2)		

Knots	60	90	120	150	180
Min:Sec					

BURLINGTON, COLORADO

Amdt 1 08213

BURLINGTON/KIT CARSON COUNTY (ITR)

39°15'N-102°17'W

NDB RWY 15