

JACKSON, KENTUCKY

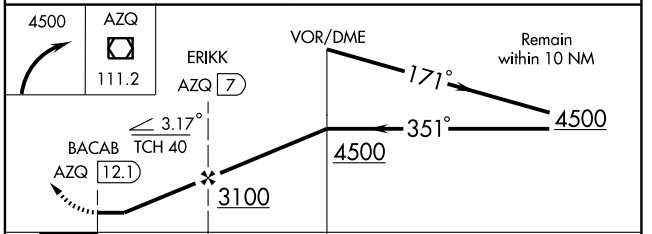
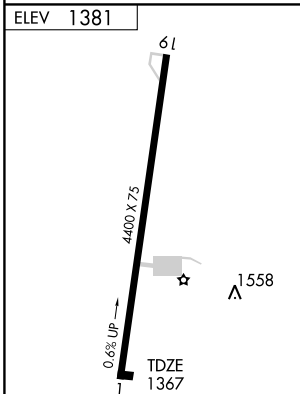
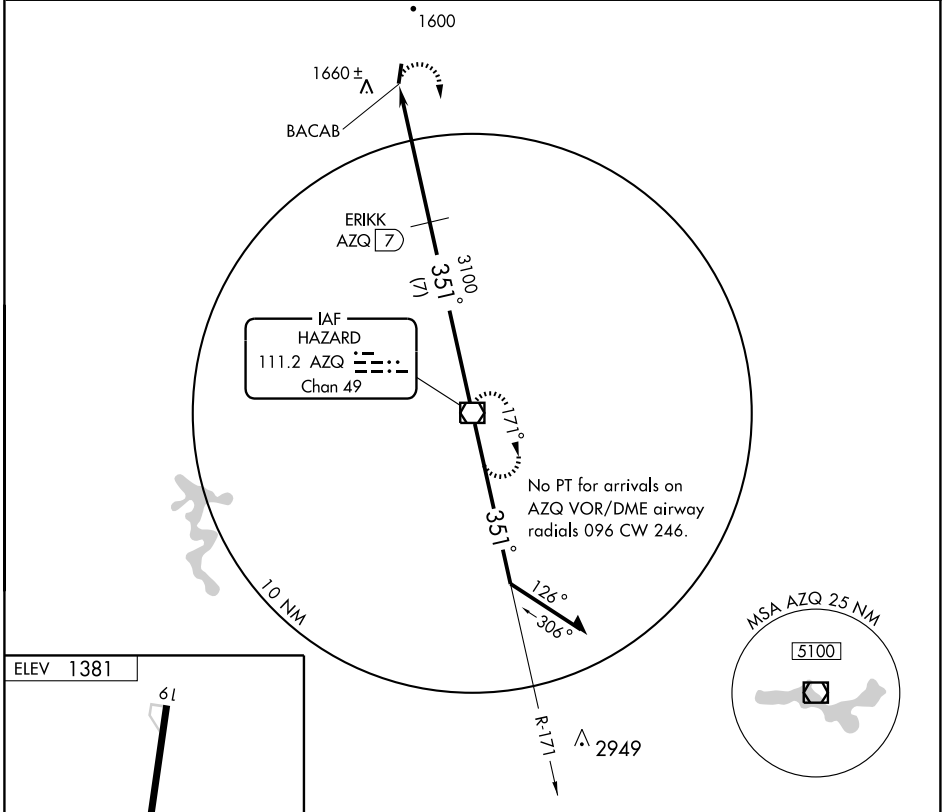
AL-6896 (FAA)

VOR/DME AZQ 111.2 Chan 49	APP CRS 351°	Rwy Idg 4400 TDZE 1367 Apt Elev 1381
---	------------------------	---

VOR/DME RWY 1
JACKSON/JULIAN CARROLL (JKL)

<p>▼ ▲ NA</p>	<p>MISSED APPROACH: Climbing right turn to 4500 direct AZQ VOR/DME and hold.</p>
-------------------	--

ASOS 118.375	INDIANAPOLIS CENTER 126.57 253.5	UNICOM 122.8 (CTAF) 0
------------------------	--	---------------------------------



CATEGORY	A	B	C	D
S-1	1960-1	593 (600-1)	1960-1½ 593 (600-1½)	1960-1¾ 593 (600-1¾)
CIRCLING	2020-1	639 (700-1)	2020-1¾ 639 (700-1¾)	2020-2 639 (700-2)

Knots	60	90	120	150	180
Min:Sec					

JACKSON, KENTUCKY
Amdt 2 07354

37°36'N-83°19'W

JACKSON/JULIAN CARROLL (JKL)
VOR/DME RWY 1

SE-1, 19 NOV 2009 to 17 DEC 2009

SE-1, 19 NOV 2009 to 17 DEC 2009