

ROXBORO, NORTH CAROLINA

AL-6901 (FAA)

WAAS CH <b>50510</b> <b>W24A</b>	APP CRS <b>240°</b>	Rwy Idg TDZE Apt Elev	<b>6005</b> <b>609</b> <b>609</b>
--	------------------------	-----------------------------	---

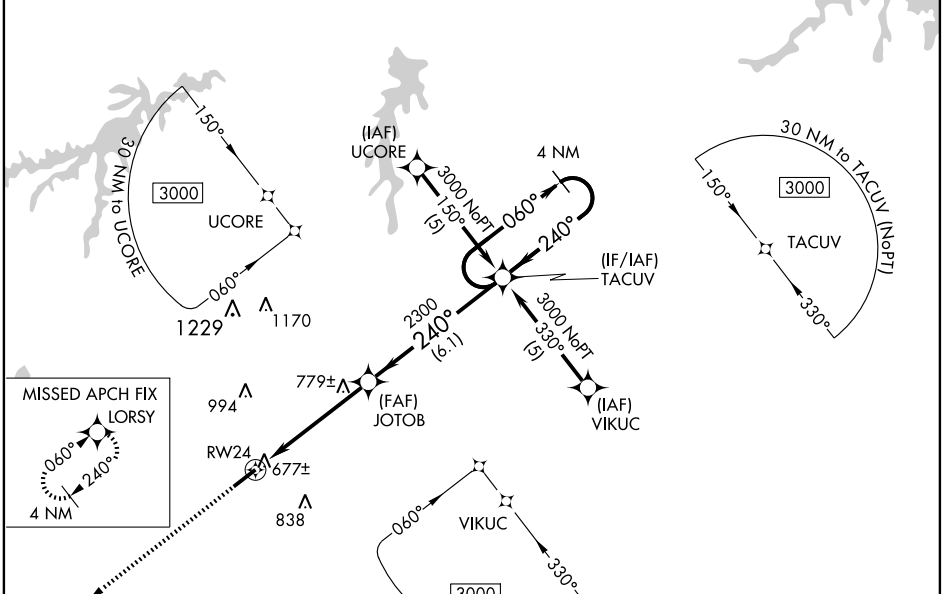
# RNAV (GPS) RWY 24

ROXBORO / PERSON COUNTY (T'DF)

For uncompensated Baro-VNAV systems, LNAV/VNAV NA below -16°C (4°F) or above 47°C (116°F). DME/DME RNP-0.3 NA. Visibility reduction by helicopters NA. When local altimeter setting not received, use Chapel Hill altimeter setting and increase LPV DA to 983, LNAV/VNAV DA to 1060, and all MDA 80 feet; increase LPV all Cats., LNAV/VNAV all Cats., and LNAV Cat. C visibility ¼ mile. VDP and Baro-VNAV NA when using Chapel Hill altimeter setting.

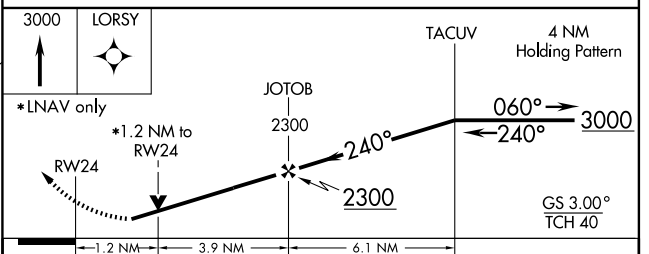
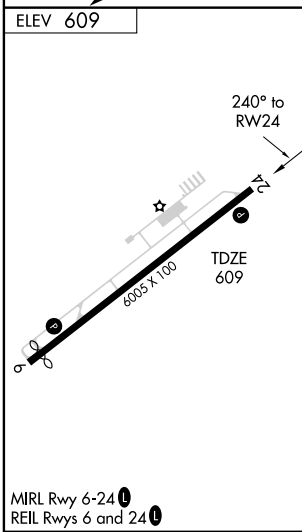
**MISSED APPROACH:**  
Climb to 3000 direct LORSY and hold.

AWOS-3 <b>126.725</b>	RALEIGH APP CON <b>132.35 256.9</b>	GCO <b>119.7</b>	UNICOM <b>122.7 (CTAF) 0</b>
--------------------------	--	---------------------	---------------------------------



SE-2, 11 MAR 2010 to 08 APR 2010

SE-2, 11 MAR 2010 to 08 APR 2010



CATEGORY	A	B	C	D
LPV DA		920-1	311 (400-1)	
LNAV/VNAV DA		997-1½	388 (400-1½)	
LNAV MDA	1040-1	431 (500-1)	1040-1¼ 431 (500-1¼)	1040-1½ 431 (500-1½)
CIRCLING	1080-1	471 (500-1)	1080-1½ 471 (500-1½)	1160-2 551 (600-2)

ROXBORO, NORTH CAROLINA  
Orig-A 09127

36°17'N - 78°59'W

ROXBORO / PERSON COUNTY (T'DF)  
**RNAV (GPS) RWY 24**