

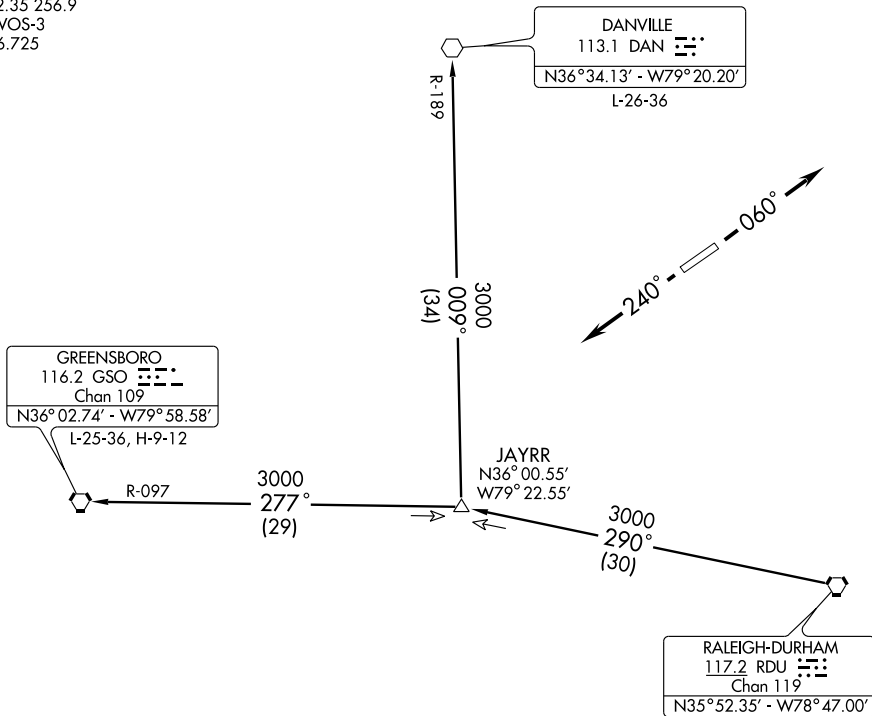
(BLUE4.RDU) 07298

# BLUE DEVIL FOUR DEPARTURE

SL-6901 (FAA)

ROXBORO/ PERSON COUNTY (T'DF)  
ROXBORO, NORTH CAROLINA

RALEIGH DEP CON  
132.35 256.9  
AWOS-3  
126.725



SE-2, 11 MAR 2010 to 08 APR 2010

SE-2, 11 MAR 2010 to 08 APR 2010

TAKEOFF MINIMUMS:  
Rwys 6, 24: STANDARD

NOTE: Turbojets not authorized.  
NOTE: Radar Required.  
NOTE: Chart not to scale.

## DEPARTURE ROUTE DESCRIPTION

**TAKE-OFF RWY 6:** Climb heading 060°, thence....

**TAKE-OFF RWY 24:** Climb heading 240°, thence....

...or as assigned for vectors to assigned transition. Expect clearance to filed altitude/flight level ten minutes after departure.

**DANVILLE TRANSITION (BLUE4.DAN):** From over RDU VORTAC via RDU R-290 to JAYRR INT then via DAN R-189 to DAN VOR.

**GREENSBORO TRANSITION (BLUE4.GSO):** From over RDU VORTAC via RDU R-290 to JAYRR INT then via GSO R-097 to GSO VORTAC.

### TAKE-OFF OBSTACLE NOTES:

Rwy 6: Trees 1600 feet from DER, 200 feet right of centerline, 100 feet AGL/729 feet MSL.

Rwy 24: Trees 562 feet from DER, 577 feet left of centerline, 100 feet AGL/699 feet MSL.

# BLUE DEVIL FOUR DEPARTURE

(BLUE4.RDU) 07298

ROXBORO, NORTH CAROLINA  
ROXBORO/ PERSON COUNTY (T'DF)