

RNAV (GPS) RWY 6

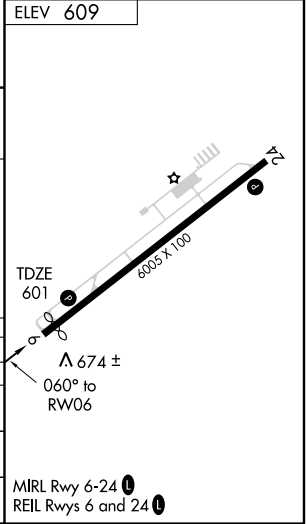
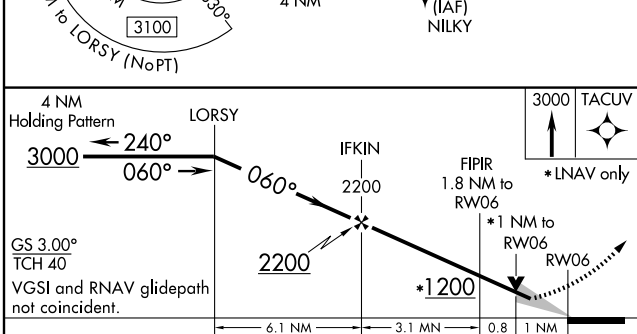
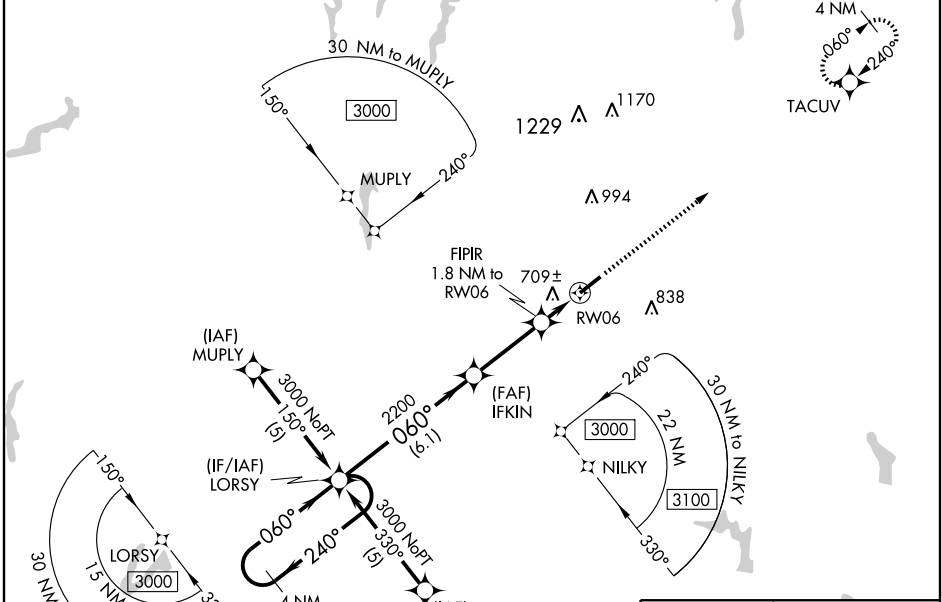
ROXBORO / PERSON COUNTY (TDF)

WAAS CH 86512 W06A	APP CRS 060°	Rwy Idg TDZE Apt Elev	5701 601 609
--	------------------------	-----------------------------	---

⚠ For inoperative MALS, increase LNAV Cat. D visibility to 1½. For uncompensated Baro-VNAV systems, LNAV/VNAV NA below -16°C (4°F) or above 47°C (116°F). DME/DME RNP-0.3 NA. When local altimeter setting not received, use Chapel Hill altimeter setting and increase LPV DA to 864, LNAV/VNAV DA to 1150 and all MDA 80 feet, increase LNAV/VNAV all Cats. and LNAV Cat. C visibility ¼ mile. For inoperative MALS, when using Chapel Hill altimeter setting, increase LPV all Cats. visibility to 1 mile. Baro-VNAV and VDP NA when using Chapel Hill altimeter setting.

⚠ MISSED APPROACH: Climb to 3000 direct TACUV and hold.

AWOS-3 126.725	RALEIGH APP CON 132.35 256.9	GCO 119.7	UNICOM 122.7 (CTAF) 0
--------------------------	--	---------------------	---------------------------------



CATEGORY	A	B	C	D
LPV DA		801-½	200 (200-½)	
LNAV/VNAV DA		1087-1¼	486 (500-1¼)	
LNAV MDA	960-½	359 (400-½)		960-1 359 (400-1)
CIRCLING	1080-1	471 (500-1)	1080-1½ 471 (500-1½)	1160-2 551 (600-2)

SE-2, 11 MAR 2010 to 08 APR 2010

SE-2, 11 MAR 2010 to 08 APR 2010