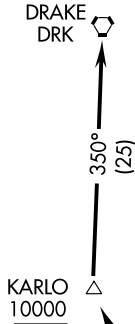


DRAKE ONE DEPARTURE (RNAV) (OBSTACLE)

ATIS 119.425
LUKE DEP CON ★
118.15 363.12
PHOENIX DEP CON
120.7 239.0
GLENDALE TOWER ★
121.0 (CTAF)
UNICOM 122.95



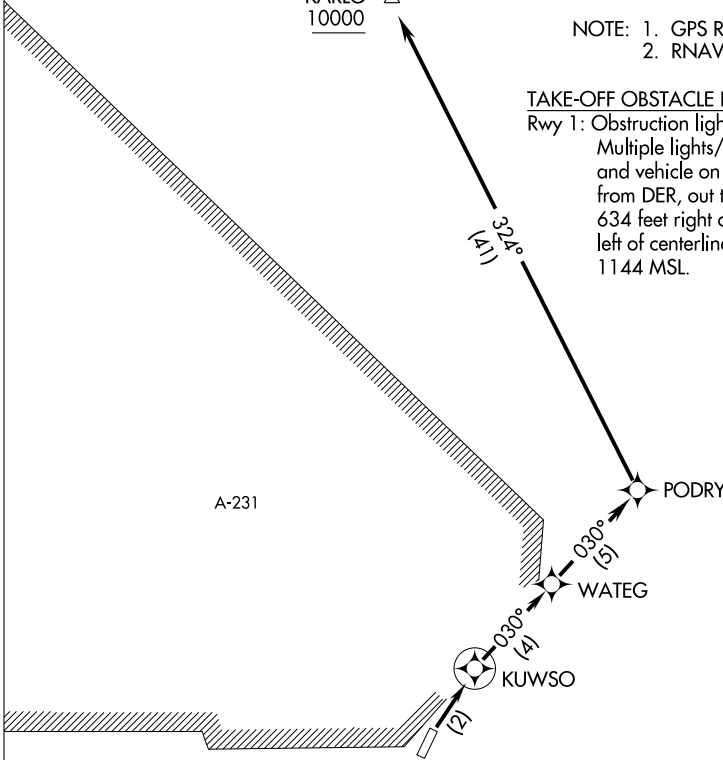
TAKE-OFF MINIMUMS

Rwy 19: NA-ATC.
Rwy 1: Standard, with minimum climb of 400 feet per NM to KUWSO.

NOTE: 1. GPS Required.
2. RNAV 1.

TAKE-OFF OBSTACLE NOTES

Rwy 1: Obstruction light on blast fence.
Multiple lights/poles, buildings, trees and vehicle on roads beginning 4 feet from DER, out to 680 feet from DER, 634 feet right of centerline to 437 feet left of centerline, up to 79 feet AGL/ 1144 MSL.



NOTE: Chart not to scale.

SW-4, 19 NOV 2009 to 17 DEC 2009

SW-4, 19 NOV 2009 to 17 DEC 2009



DEPARTURE ROUTE DESCRIPTION

TAKE-OFF RWY 1: Climb direct KUWSO, then via depicted route to cross KARLO at or above 10,000.