

GLENDALE, ARIZONA

AL-6915 (FAA)

RNAV (GPS) RWY 1

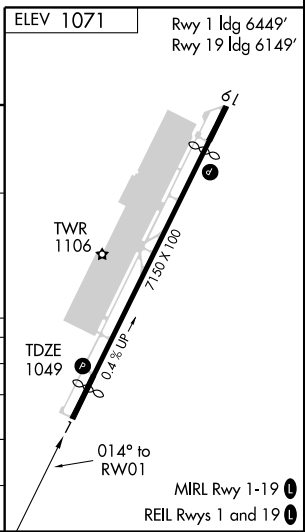
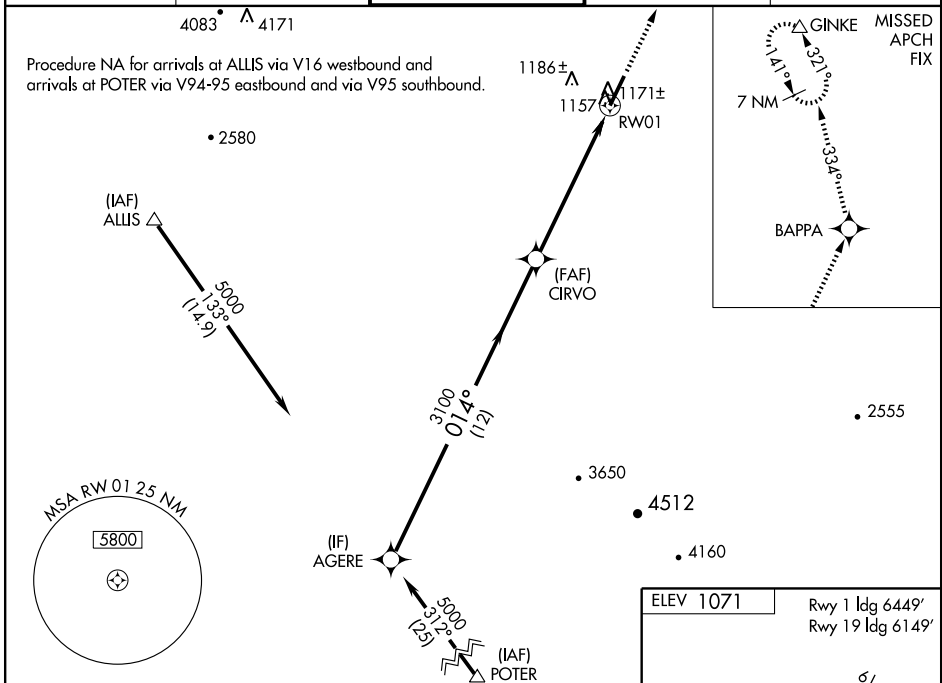
GLENDALE MUNI (GEU)

WAAS CH 90306 W01A	APP CRS 014°	Rwy ldg 6449 TDZE 1049 Apt Elev 1071
--	------------------------	---

⚠ Circling not authorized west of Rwy 1-19. DME/DME RNP-0.3 NA. Baro-VNAV NA when using Phoenix Sky Harbor Intl altimeter setting. For uncompensated Baro-VNAV systems, LNAV/VNAV NA below -17°C (2°F) or above 47°C (117°F). When local altimeter setting not received, use Phoenix Sky Harbor Intl altimeter setting and increase all DAs/MDAs 60 feet, LNAV/VNAV all Cats visibility 1/4 mile and LNAV Cat C/D visibility 1/4 mile.

MISSED APPROACH: Climb to 10000 direct BAPPA and via 334° track to GINKE and hold, continue climb-in-hold to 10000.

ATIS 119.425	LUKE APP CON * 118.15 363.12	GLENDALE TOWER * 121.0 (CTAF)	GND CON 118.0	UNICOM 122.95
------------------------	--	---	-------------------------	-------------------------



AGERE		Procedure Turn NA		10000	BAPPA	334° track	GINKE
5000		CIRVO		↑	✧	✧	△
GS 3.00° TCH 40		RWY 01					
12 NM		6.2 NM					
CATEGORY	A	B	C	D			
LPV DA	1378-1¼		329 (400-1¼)				
LNAV/VNAV DA	1457-1½		408 (400-1½)				
LNAV MDA	1440-1		391 (400-1)		1440-1¼ 391 (400-1¼)		
CIRCLING	1460-1 389 (400-1)	1540-1 469 (500-1)	1540-1½ 469 (500-1½)	1640-2 569 (600-2)			

SW-4, 19 NOV 2009 to 17 DEC 2009

SW-4, 19 NOV 2009 to 17 DEC 2009

GLENDALE, ARIZONA
Orig-A 08157

33°32'N - 112°18'W

GLENDALE MUNI (GEU)
RNAV (GPS) RWY 1