

ILS RWY 35L

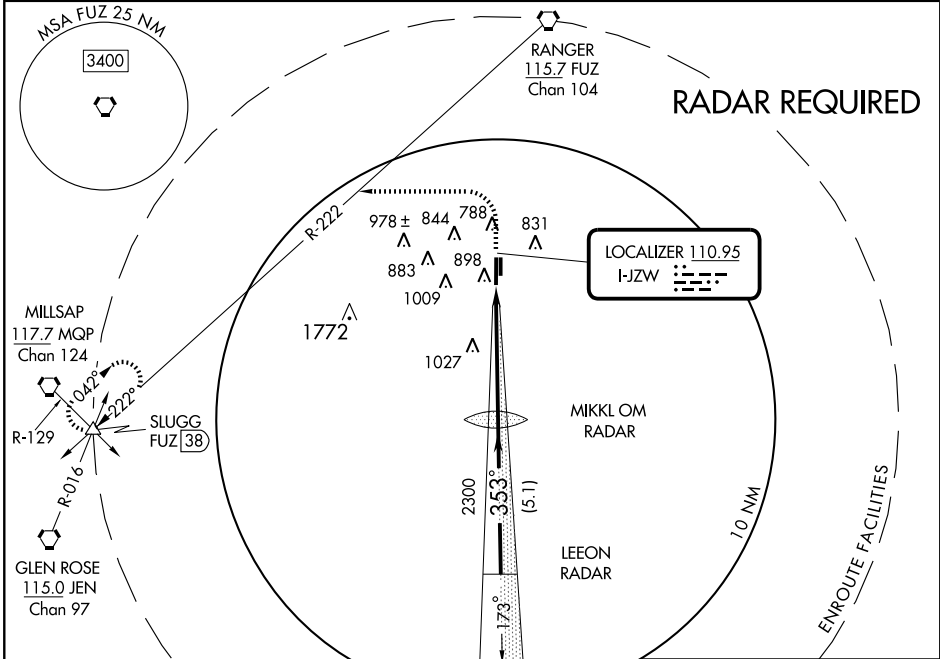
FORT WORTH SPINKS (FWS)

LOC I-JZW 110.95	APP CRS 353°	Rwy Idg TDZE Apt Elev	6002 697 700
----------------------------	------------------------	-----------------------------	---

⚠ Circling not authorized west of Runway 17R-35L. Obtain local altimeter on CTAF; when not received, use Fort Worth Meacham altimeter setting minimums.

⚠ NA MISSED APPROACH: Climb to 1800 then climbing left turn to 3100 via heading 265° and FUZ R-222 to SLUGG Int/FUZ 38 DME and hold.

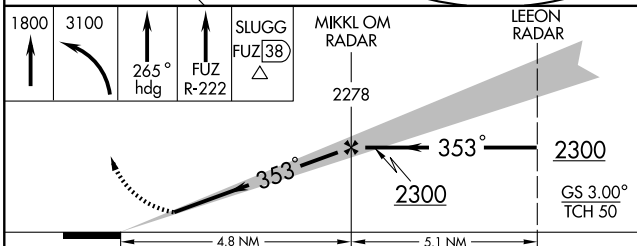
AWOS-3 120.025	REGIONAL APP CON 135.975 379.9	SPINKS TOWER ★ 124.625 (CTAF) 0	GND CON 119.475	GCO 121.725	UNICOM 122.7
--------------------------	--	--	---------------------------	-----------------------	------------------------



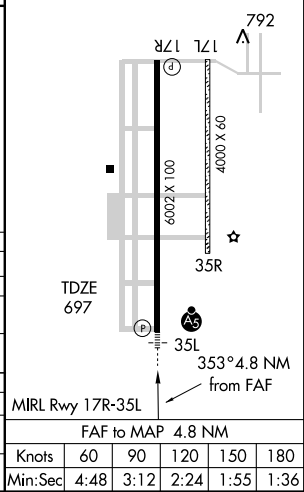
SC-2, 19 NOV 2009 to 17 DEC 2009

SC-2, 19 NOV 2009 to 17 DEC 2009

ELEV 700



CATEGORY	A	B	C	D
S-ILS 35L	897-1/2 200 (200-1/2)			
S-LOC 35L	1220-1/2 523 (600-1/2)		523 (600-1)	1220-1 1/4 523 (600-1 1/4)
CIRCLING	1220-1 520 (600-1)		1220-1 1/2 520 (600-1 1/2)	1260-2 560 (600-2)
FORT WORTH MEACHAM ALTIMETER SETTING MINIMA				
S-ILS 35L	934-1/2 237 (300-1/2)			
S-LOC 35L	1260-1/2 563 (600-1/2)		1260-1 563 (600-1)	1260-1 1/4 563 (600-1 1/4)
CIRCLING	1260-1 560 (600-1)		1260-1 1/2 560 (600-1 1/2)	1260-2 560 (600-2)



FAF to MAP 4.8 NM					
Knots	60	90	120	150	180
Min:Sec	4:48	3:12	2:24	1:55	1:36