

RNAV (GPS) RWY 35L

FORT WORTH SPINKS (FWS)

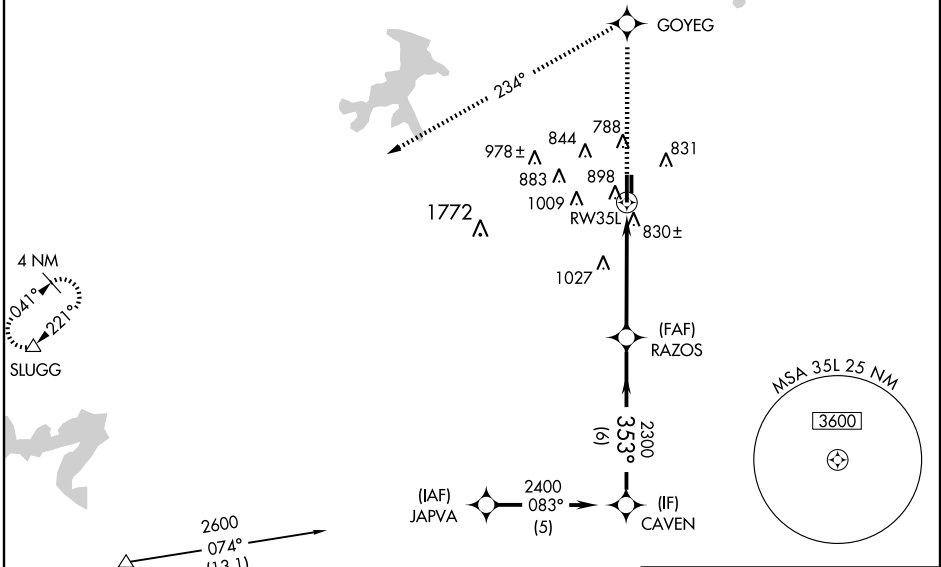
WAAS CH 57999 W35A	APP CRS 353°	Rwy Idg TDZE 697 Apt Elev 700	6002
---------------------------------	------------------------	---	-------------

▼ DME/DME RNP-0.3 NA. BARO-VNAV NA below -16°C (4°F). If local altimeter setting not received, use Fort Worth Meacham altimeter setting and increase all DAs/MDAs 40 feet. For inoperative MALSR increase LPV visibility all Cats to 1. Circling NA west of Rwy 17R-35L. BARO/VNAV and VDP NA with Fort Worth Meacham altimeter setting.

MALSR
MISSED APPROACH:
Climb to 3100 direct GOYEG and left turn via 234° track to SLUGG and hold.

AWOS-3 120.025	REGIONAL APP CON 135.975 379.9	SPINKS TOWER ★ 124.625 (CTAF) 0	GND CON 119.475	GCO 121.725	UNICOM 122.7
--------------------------	--	---	---------------------------	-----------------------	------------------------

RADAR REQUIRED



SC-2, 19 NOV 2009 to 17 DEC 2009

SC-2, 19 NOV 2009 to 17 DEC 2009

3100	GOYEG	SLUGG		
↑	⬠	△		
	234° TRK			
	RAZOS	CAVEN		
	*1.9 NM to RW35L	2400		
	*LNAV only.	2300		
	1.9 NM	2.9 NM	6 NM	
CATEGORY	A	B	C	D
LPV DA		947-½	250 (300-½)	
LNAV/VNAV DA		1112-1	415 (500-1)	
LNAV MDA	1340-½	643 (700-½)	1340-1¼ 643 (700-1¼)	1340-1½ 643 (700-1½)
CIRCLING	1340-1½	640 (700-1½)	1340-1¾ 640 (700-1¾)	1340-2 640 (700-2)

