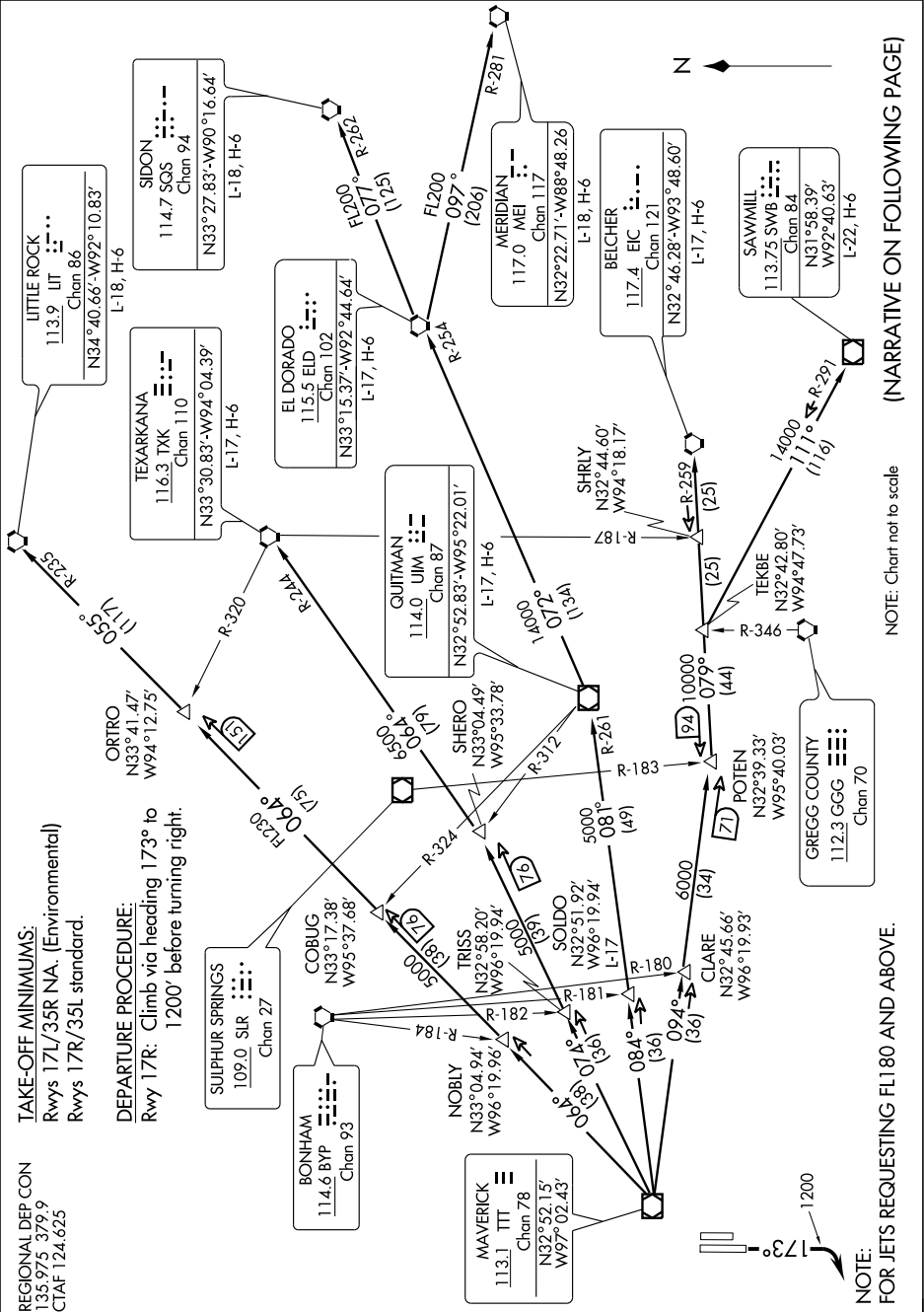


SC-2, 19 NOV 2009 to 17 DEC 2009

TAKE-OFF MINIMUMS:
Rwys 17L/35R NA. (Environmental)
Rwys 17R/35L standard.

REGIONAL DEP CON
135.975 379.9
CTAF 124.625

DEPARTURE PROCEDURE:
Rwy 17R: Climb via heading 173° to
1200' before turning right.



(NARRATIVE ON FOLLOWING PAGE)

NOTE: Chart not to scale

SC-2, 19 NOV 2009 to 17 DEC 2009

NOTE:
FOR JETS REQUESTING FL180 AND ABOVE.