

JOE POOL FOUR DEPARTURE

SL-6917 (FAA)

FORT WORTH, TEXAS

GND CON 119.475
 SPINKS TOWER*
 124.625 (CTAF)
 REGIONAL DEP CON
 135.975 379.9
 AWOS-3 120.025

MAVERICK
 113.1 TTT
 Chan 78
 N32°52.15'-W97°02.43'

TAKE-OFF MINIMUMS:

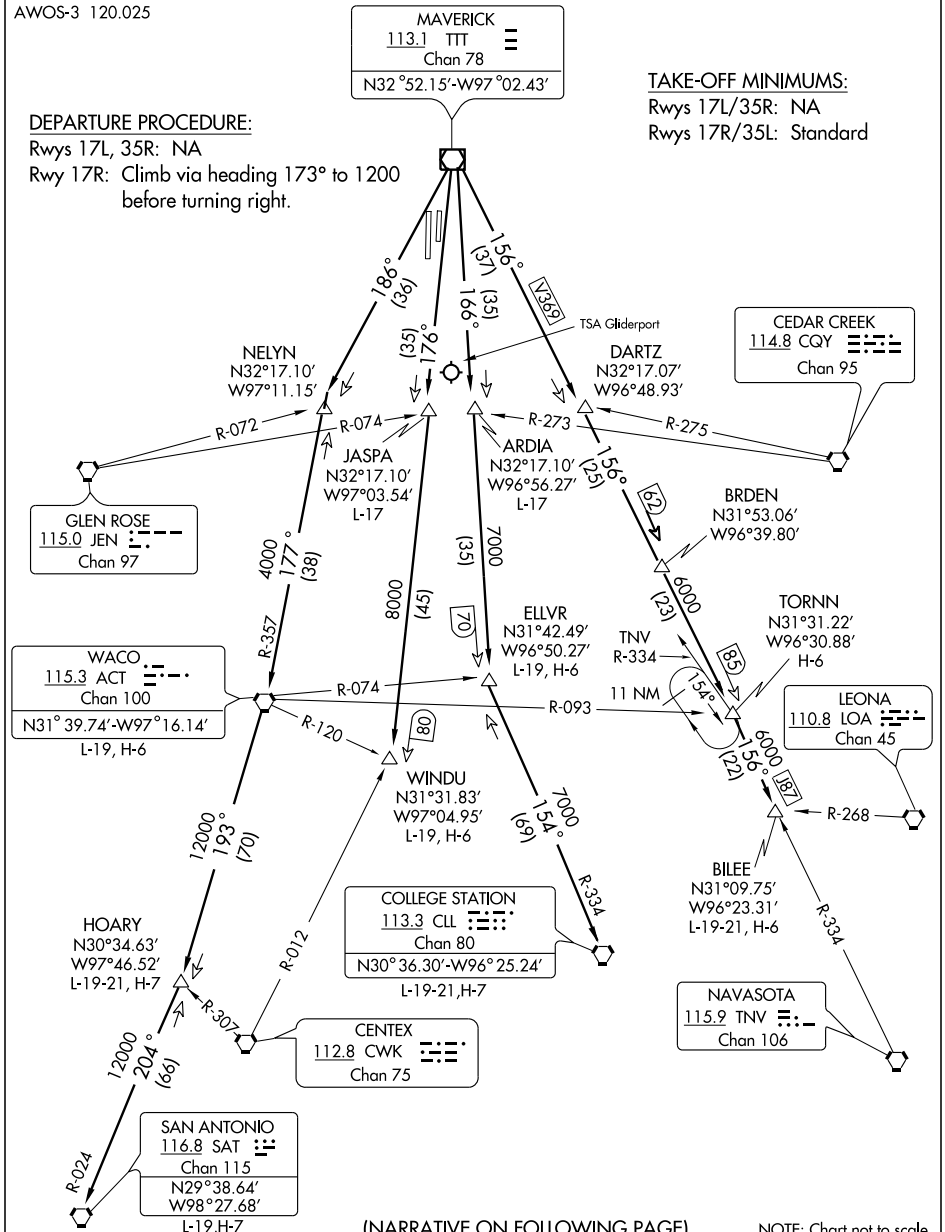
Rwys 17L/35R: NA
 Rwys 17R/35L: Standard

DEPARTURE PROCEDURE:

Rwys 17L, 35R: NA
 Rwy 17R: Climb via heading 173° to 1200
 before turning right.

SC-2, 11 MAR 2010 to 08 APR 2010

SC-2, 11 MAR 2010 to 08 APR 2010



(NARRATIVE ON FOLLOWING PAGE)

NOTE: Chart not to scale

JOE POOL FOUR DEPARTURE

FORT WORTH, TEXAS