

RNAV (GPS) RWY 17R

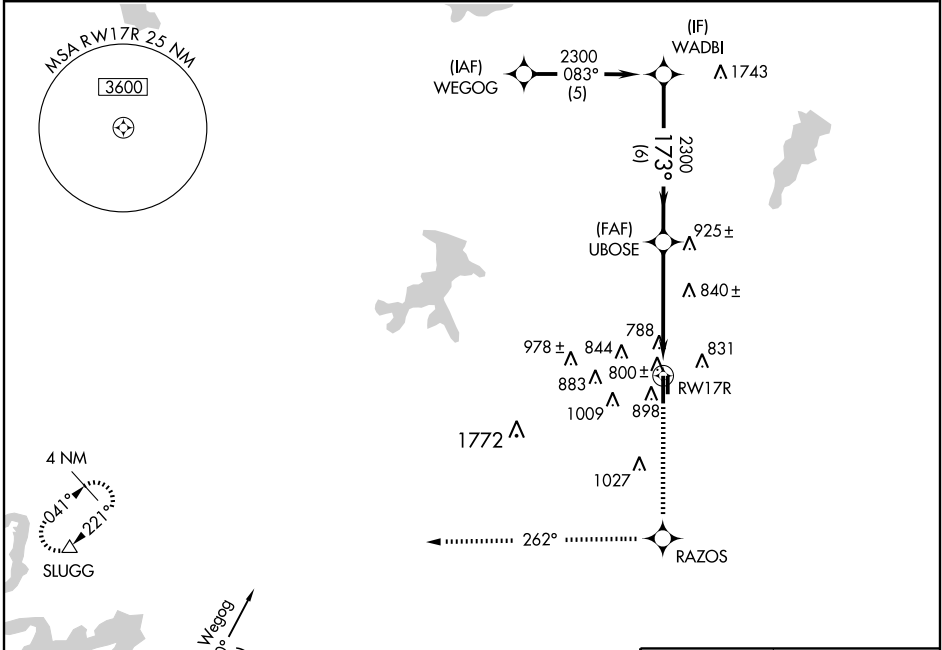
FORT WORTH SPINKS (FWS)

WAAS CH 62899 W17A	APP CRS 173°	Rwy Idg TDZE 700 Apt Elev 700	6002
--	------------------------	---	-------------

⚠ DME/DME RNP-0.3 NA. BARO-VNAV NA below -16°C (4°F). If local altimeter setting not received, use Fort Worth Meacham altimeter setting and increase all DAs/MDAs 40 feet.
⚠ Circling NA west of Rwy 17R-35L. BARO/VNAV and VDP NA with Fort Worth Meacham altimeter setting.

MISSED APPROACH: Climb to 3100 direct RAZOS and via 262° track to SLUGG and hold.

AWOS-3 120.025	REGIONAL APP CON 135.975 379.9	SPINKS TOWER ★ 124.625 (CTAF) 0	GND CON 119.475	GCO 121.725	UNICOM 122.7
--------------------------	--	--	---------------------------	-----------------------	------------------------



SC-2, 19 NOV 2009 to 17 DEC 2009

SC-2, 19 NOV 2009 to 17 DEC 2009

RADAR REQUIRED

ELEV 700

173° to RWY 17R

	WADBI	UBOSE	3100	RAZOS	262° TRK	SLUGG
	2300	173°	2300			
	GS 3.00° TCH 52			*1.2 NM to RWY 17R		
				*LNAV only.		
		6 NM	3.6 NM	1.2		
CATEGORY	A	B	C	D		
LPV DA		987-1	287 (300-1)			
LNAV/VNAV DA		1124-1½	424 (500-1½)			
LNAV MDA	1140-1	440 (500-1)	1140-1¼ 440 (500-1¼)	1140-1½ 440 (500-1½)		
CIRCLING	1140-1½ 440 (500-1½)	1200-1½	500 (500-1½)	1260-2 560 (600-2)		

