

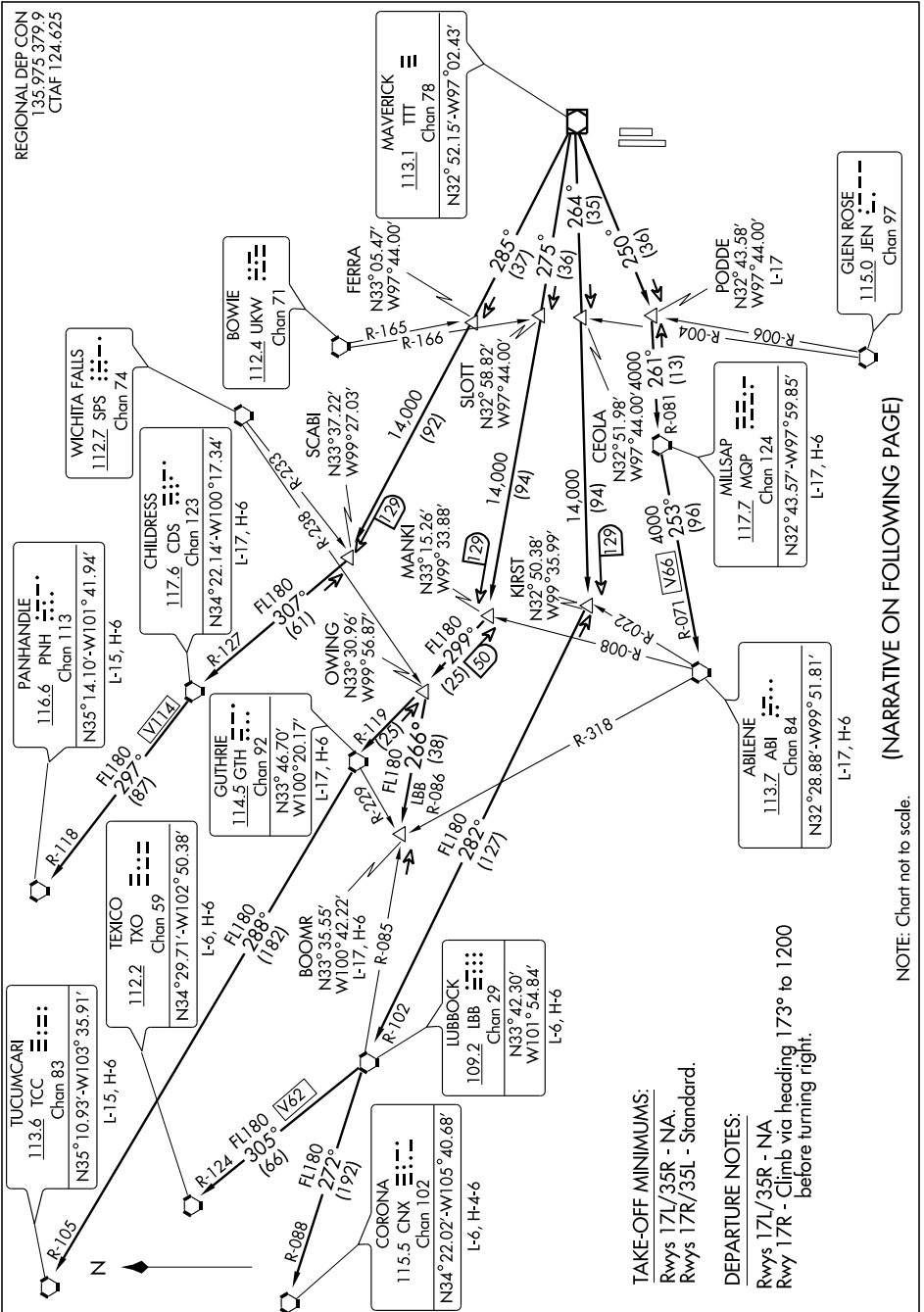
WORTH FIVE DEPARTURE

SL-6917 (FAA)

FORT WORTH SPINKS (FWS)

FORT WORTH, TEXAS

SC-2, 11 MAR 2010 to 08 APR 2010



(NARRATIVE ON FOLLOWING PAGE)

NOTE: Chart not to scale.

TAKE-OFF MINIMUMS:
 Rwy 17L/35R - NA.
 Rwy 17R/35L - Standard.

DEPARTURE NOTES:
 Rwy 17L/35R - NA
 Rwy 17R - Climb via heading 173° to 1200 before turning right.

SC-2, 11 MAR 2010 to 08 APR 2010