

# RNAV (GPS) RWY 34R

FORT WORTH ALLIANCE (AFW)

APP CRS <b>343°</b>	Rwy Idg <b>8516</b> TDZE <b>681</b> Apt Elev <b>722</b>
------------------------	---

**NA** GPS or RNP-0.3 REQUIRED. DME/DME RNP-0.3 NA. For inoperative MALSR, increase LNAV Cat A and B visibility to RVR 5000, and Cat E to 2 miles. For inoperative MALSR, increase LNAV/VNAV Cat E visibility to 2¾. When VGSi inoperative circling Rwy 34L not authorized at night. Circling not authorized east of runway 16L-34R. BARO-VNAV NA below -16°C (4°F).

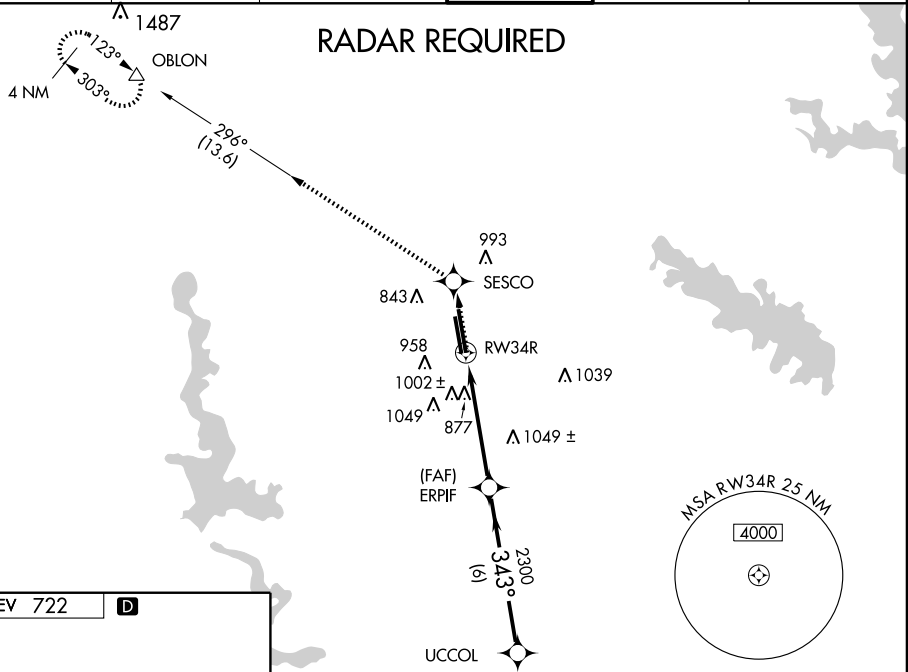
MALSR



MISSED APPROACH: Climb to 3000 direct SESCO WP and via 296° track to OBLON WP and hold.

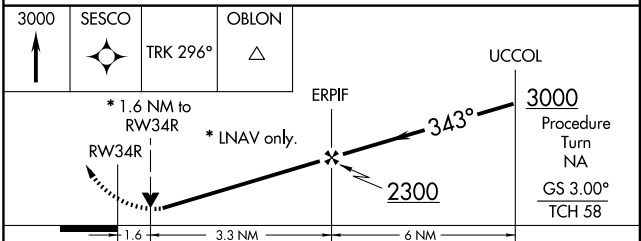
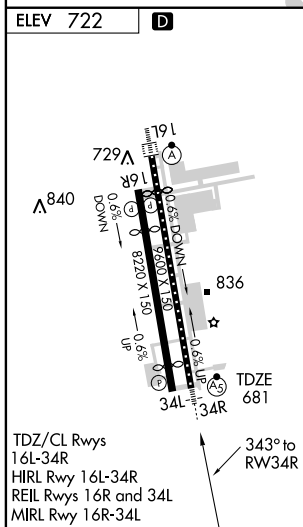
ATIS <b>126.925</b>	ASOS <b>126.925</b>	REGIONAL APP CON <b>118.1 306.95</b>	ALLIANCE TOWER <b>135.15 288.15</b>	GND CON <b>132.65 306.2</b>	CLNC DEL <b>128.725</b>
------------------------	------------------------	---	--	--------------------------------	----------------------------

## RADAR REQUIRED



SC-2, 11 MAR 2010 to 08 APR 2010

SC-2, 11 MAR 2010 to 08 APR 2010



CATEGORY	A	B	C	D	E
GLS DA	NA				
LNAV/VNAV DA	1420-2¼ 739 (700-2¼)				
LNAV MDA	1240/40	559 (600-¾)	1240/50 559 (600-1)	1240/60 559 (600-1¼)	1240-1½ 559 (600-1½)
CIRCLING	1240-2¾ 518 (600-2¾)	1260-2¾ 538 (600-2¾)	1320-2¾ 598 (600-2¾)	1380-2¾ 658 (700-2¾)	