

# GPS RWY 24

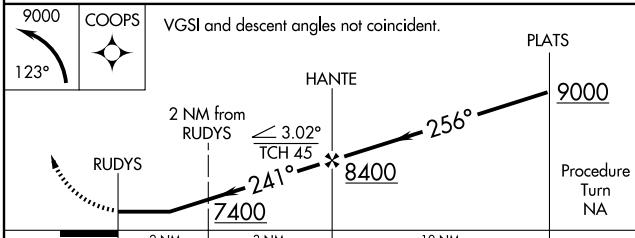
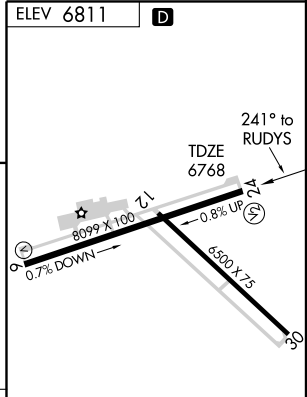
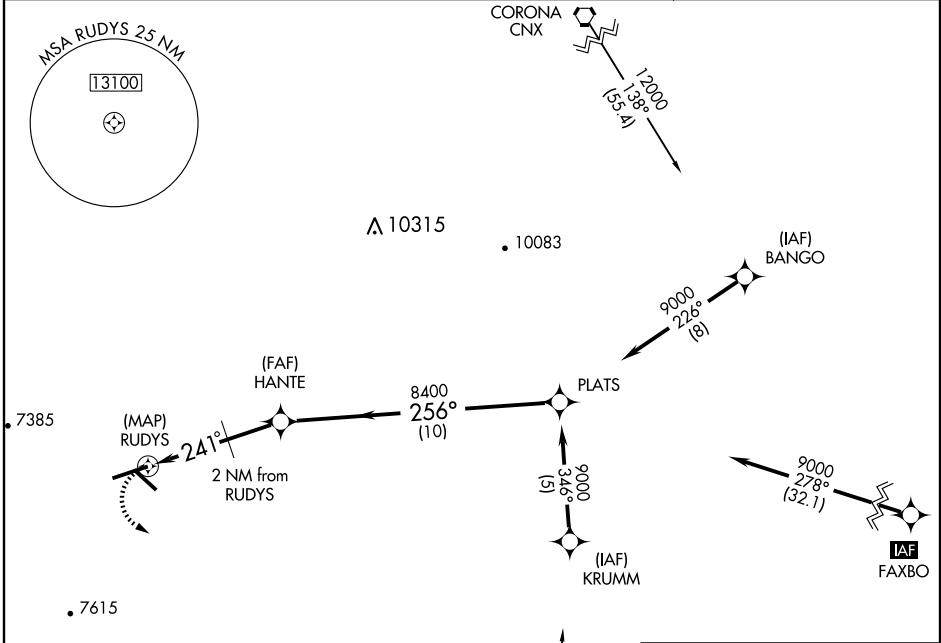
RUIDOSO/SIERRA BLANCA RGNL (S.R.R.)

APP CRS <b>241°</b>	Rwy Idg <b>8099</b>
	TDZE <b>6768</b>
	Apt Elev <b>6811</b>

**▼** If local altimeter setting not received, procedure not authorized.  
**▲ NA** **IAF** ARM APPROACH MODE PRIOR TO IAF.

MISSED APPROACH: Climbing left turn to 9000 via 123° course to COOPS WP and hold.

AWOS-3 <b>126.475</b>	ALBUQUERQUE CENTER <b>132.65 257.6</b>	UNICOM <b>122.8 (CTAF) ①</b>
--------------------------	---	---------------------------------



CATEGORY	A	B	C	D
S-24	7200-1	432 (500-1)	7200-1¼ 432 (500-1¼)	7200-1½ 432 (500-1½)
CIRCLING	7240-1 429 (500-1)	7300-1 489 (500-1)	7320-1½ 509 (600-1½)	7440-2 629 (700-2)

MIRL Rwy 6-24 and 12-30 ①

# GPS RWY 24

SW-1, 11 MAR 2010 to 08 APR 2010

SW-1, 11 MAR 2010 to 08 APR 2010