

ILS or LOC/DME RWY 24

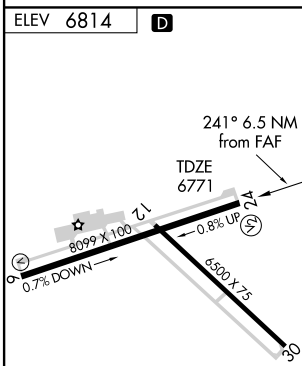
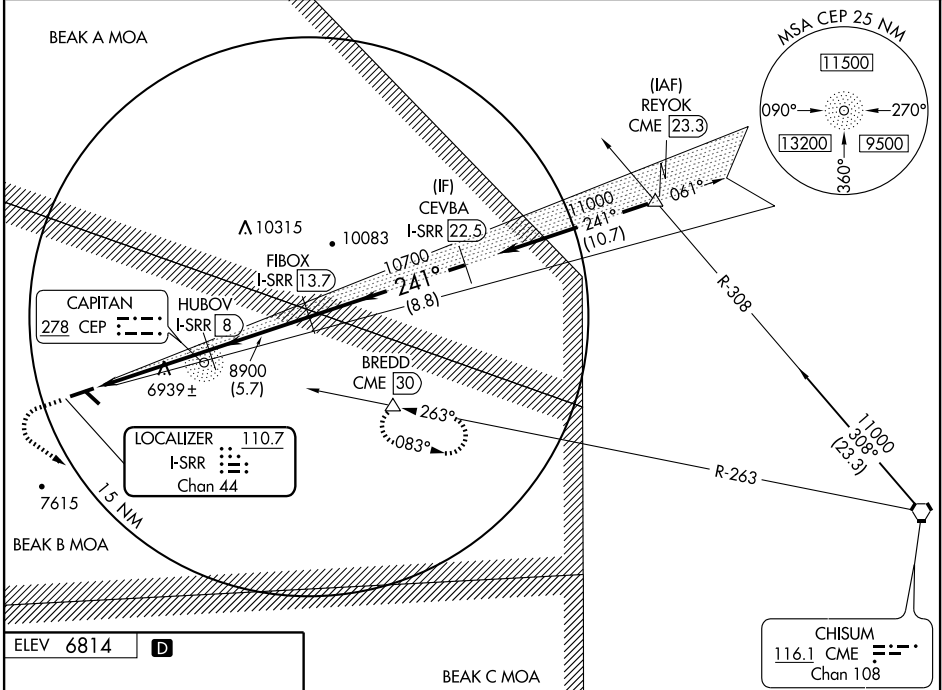
RUIDOSO/ SIERRA BLANCA RGNL (S.R.R.)

LOC/DME I-SRR 110.7 Chan 44	APP CRS 241°	Rwy Idg 8099 TDZE 6771 Apt Elev 6814
---	------------------------	---

NA If local altimeter setting not received procedure not authorized.
Use I-SRR DME when on localizer course.
Circling not authorized to Rwy 12/30.

MISSED APPROACH: Climb to 7500 then climbing left turn to 11000 via heading 110° and CME VORTAC R-263 to BREDD/CME 30 DME and hold, continue climb-in-hold to 11000.

AWOS-3 126.475	ALBUQUERQUE CENTER 132.65 257.6	UNICOM 122.8 (CTAF)
--------------------------	---	-------------------------------



DME REQUIRED

7500	11000	CME R-263	BREDD	HUBOV I-SRR 8	FIBOX I-SRR 13.7	CEVBA I-SRR 22.5
↑	↙	116.1	△	8900	10700	11000
VGS and ILS glidepath not coincident.						
I-SRR 1.5		I-SRR 3.1	I-SRR 8	I-SRR 13.7	I-SRR 22.5	11000
1.7 NM		4.8 NM	5.7 NM	8.8 NM		

Procedure Turn NA

GS 3.00° TCH 50

CATEGORY	A	B	C	D
S-ILS 24	6971-3/4 200 (200-3/4)			
S-LOC 24	7220-1	449 (500-1)	7220-1 1/4 449 (500-1 1/4)	7220-1 1/2 449 (500-1 1/2)
CIRCLING	7320-1 506 (600-1)	7360-1 546 (600-1)	7360-1 1/2 546 (600-1 1/2)	7500-2 1/4 686 (700-2 1/4)

MIRL Rwy 6-24 and 12-30

SW-1, 19 NOV 2009 to 17 DEC 2009

SW-1, 19 NOV 2009 to 17 DEC 2009