

GPS RWY 24

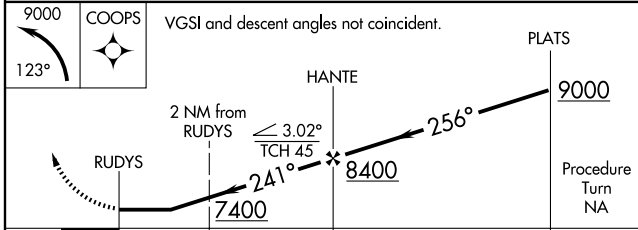
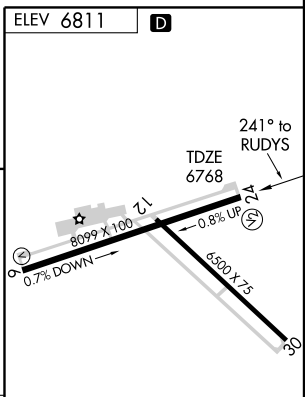
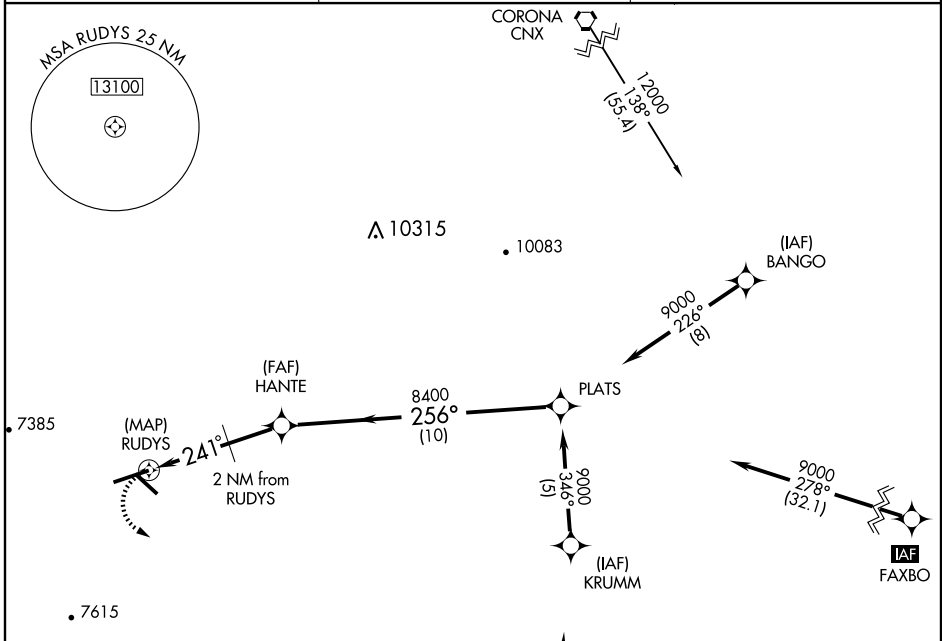
RUIDOSO/SIERRA BLANCA RGNL (S.R.R.)

APP CRS 241°	Rwy Idg 8099
	TDZE 6768
	Apt Elev 6811

▽ If local altimeter setting not received, procedure not authorized.
▲ NA **IAF** ARM APPROACH MODE PRIOR TO IAF.

MISSED APPROACH: Climbing left turn to 9000 via 123° course to COOPS WP and hold.

AWOS-3 126.475	ALBUQUERQUE CENTER 132.65 257.6	UNICOM 122.8 (CTAF) ①
--------------------------	---	---------------------------------



CATEGORY	A	B	C	D
S-24	7200-1	432 (500-1)	7200-1¼ 432 (500-1¼)	7200-1½ 432 (500-1½)
CIRCLING	7240-1 429 (500-1)	7300-1 489 (500-1)	7320-1½ 509 (600-1½)	7440-2 629 (700-2)

MIRL Rwy 6-24 and 12-30 ①

GPS RWY 24

SW-1, 19 NOV 2009 to 17 DEC 2009

SW-1, 19 NOV 2009 to 17 DEC 2009