

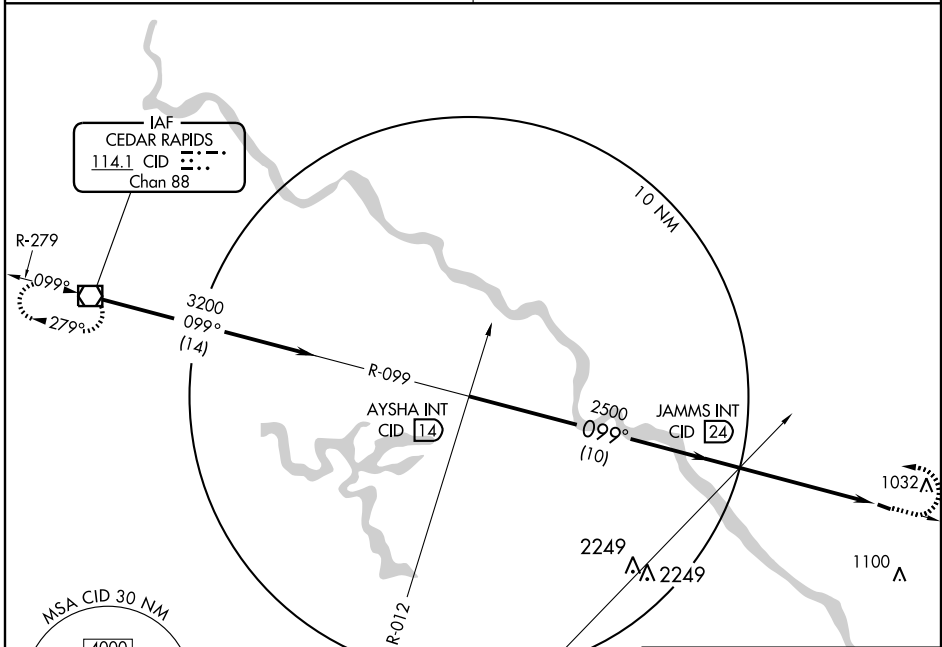
TIPTON, IOWA

AL-6924 (FAA)

VOR/DME CID 114.1 Chan 88	APP CRS 099°	Rwy Idg 3000 TDZE 840 Apt Elev 840
---	------------------------	---

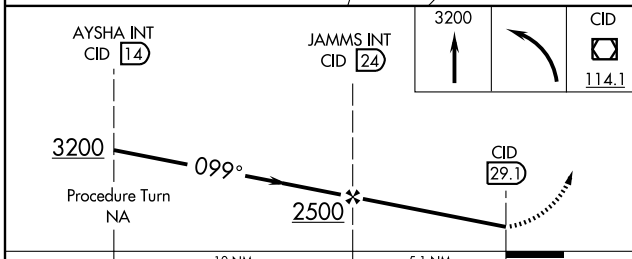
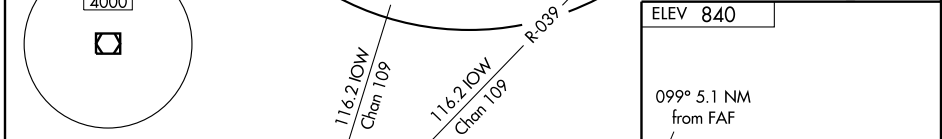
VOR RWY 11
TIPTON/MATHEWS MEMORIAL (8C4)

▼ Use Cedar Rapids altimeter setting. ▲ NA	MISSED APPROACH: Climb to 3200, then left turn direct CID VOR/DME and hold.
CEDAR RAPIDS APP CON ★ 119.7 266.8	CTAF 122.9



NC-3, 11 MAR 2010 to 08 APR 2010

NC-3, 11 MAR 2010 to 08 APR 2010



CATEGORY	A	B	C	D
S-11	1300-1 460 (500-1)	1300-1¼ 460 (500-1¼)	NA	NA
CIRCLING	1440-1 600 (600-1)	1460-1¼ 620 (700-1¼)	NA	NA

MIRL Rwy 11-29					
FAF to MAP 5.1 NM					
Knots	60	90	120	150	180
Min:Sec	5:06	3:24	2:33	2:02	1:42

TIPTON, IOWA
Amdt 2 06047

41°46'N-91°09'W

TIPTON/MATHEWS MEMORIAL (8C4)
VOR RWY 11