

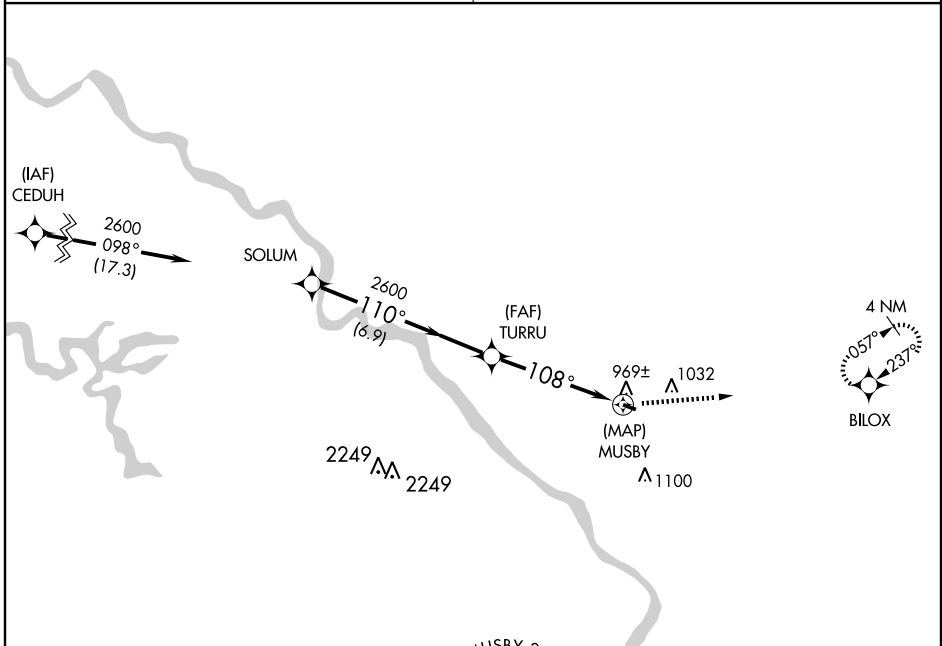
GPS RWY 11

TIPTON/MATHEWS MEMORIAL (8C4)

APP CRS 108°	Rwy Idg 3000
	TDZE 840
	Apt Elev 840

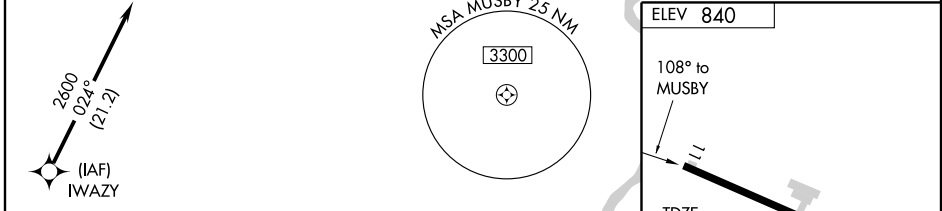
<p>▼ Use Cedar Rapids altimeter setting.</p> <p>▲ NA</p>	<p>MISSED APPROACH: Climb to 3500 direct to BILOX WP and hold.</p>
--	--

<p>CEDAR RAPIDS APP CON ★</p> <p>119.7 266.8</p>	<p>CTAF</p> <p>122.9</p>
---	---------------------------------



NC-3, 19 NOV 2009 to 17 DEC 2009

NC-3, 19 NOV 2009 to 17 DEC 2009



	SOLUM	TURRU	3500	BILOX
			↑	✧
Procedure	2600	2600		MUSBY
Turn	110°	108°		
NA				
	6.9 NM		5 NM	
CATEGORY	A	B	C	D
S-11	1300-1	460 (500-1)	NA	
CIRCLING	1440-1 600 (600-1)	1460-1 620 (700-1)	NA	

ELEV 840
108° to MUSBY
TDZE 840
3000 X 60
MIRL Rwy 11-29

GPS RWY 11