

GPS RWY 19

HUNTINGDON/CARROLL COUNTY (HZD)

APP CRS 192°	Rwy Idg 5507
	TDZE 496
	Apt Elev 496

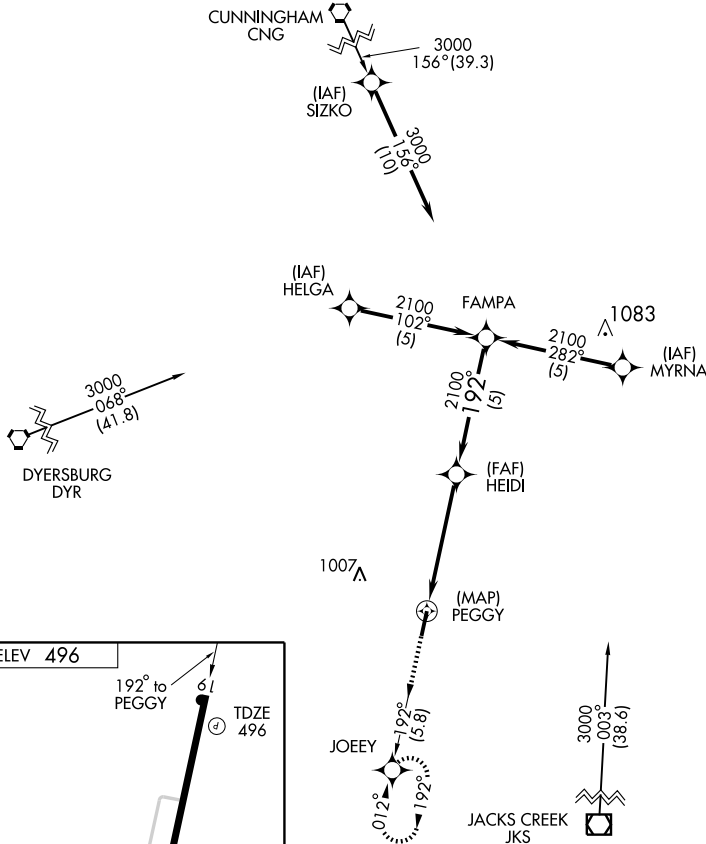
▽ If local altimeter setting not received, use Jackson, TN altimeter setting and increase all MDAs 100 feet.

MISSED APPROACH: Climb to 2000 via 192° course to JOEY WP and hold.

AWOS-3
133.275

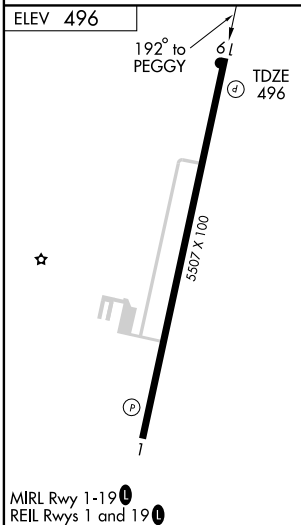
MEMPHIS CENTER
134.65 316.15

UNICOM
122.8 (CTAF) 0



SE-1, 19 NOV 2009 to 17 DEC 2009

SE-1, 19 NOV 2009 to 17 DEC 2009



2000	JOEY	HEIDI	FAMPA	
↑	☆	☆	☆	
CRS 192°		← 192°	← 2100	
	PEGGY	← 2100	Procedure Turn NA	
	5 NM	5 NM		
CATEGORY	A	B	C	D
S-19	1000-1	504 (600-1)	1000-1½	504 (600-1½)
CIRCLING	1000-1	504 (600-1)	1000-1½	1060-2
			504 (600-1½)	564 (600-2)

GPS RWY 19