

MORRILTON, ARKANSAS

AL-6933 (FAA)

RNAV (GPS) RWY 27

MORRILTON MUNI (BDQ)

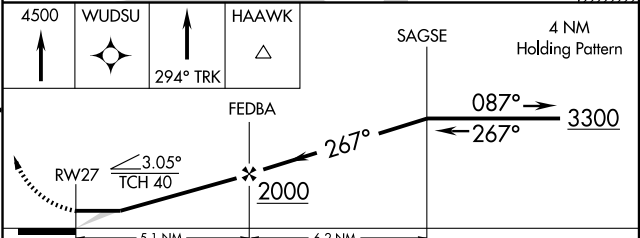
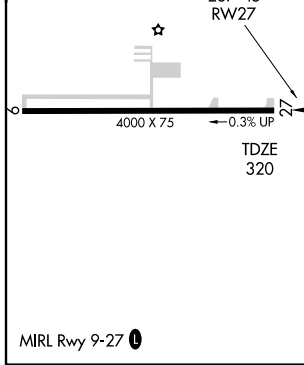
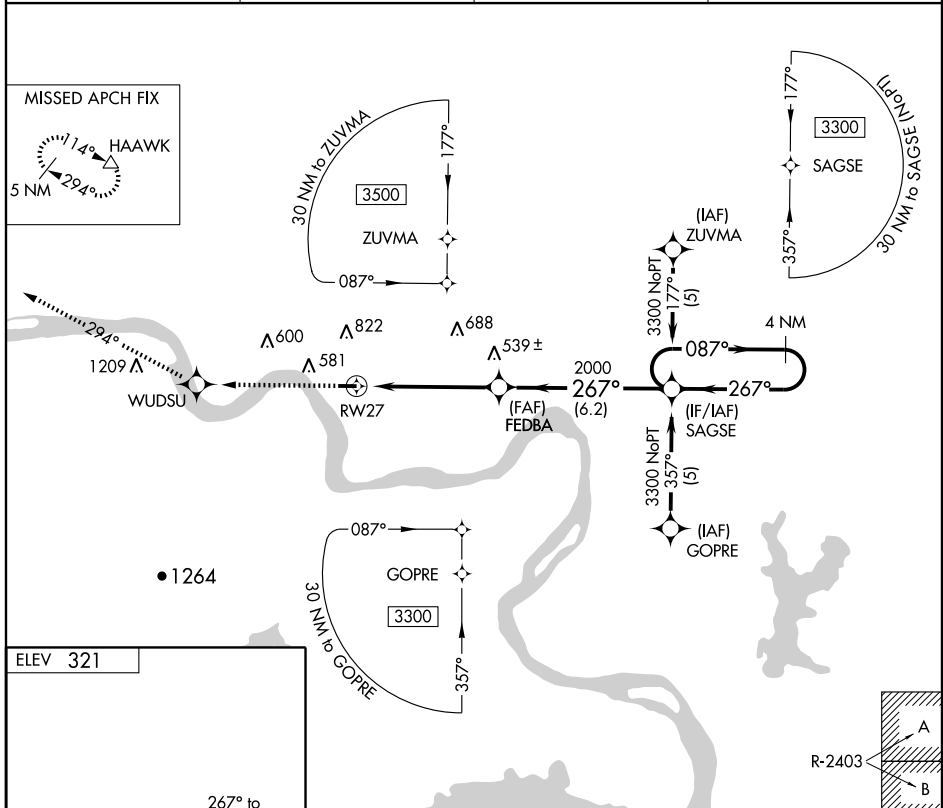
APP CRS	Rwy Idg	4000
267°	TDZE	320
	Apt Elev	321

▽ DME/DME RNP-0.3 NA. Use Russellville altimeter setting, when not received, use Little Rock altimeter setting.

▲ NA

MISSED APPROACH: Climb to 4500 direct WUDSU and via 294° track to HAAWK and hold.

RUSSELLVILLE AWOS 132.475	MEMPHIS CENTER 128.475 377.15	UNICOM 122.8 (CTAF)	122.9 0
-------------------------------------	---	-------------------------------	-----------------------



CATEGORY	A	B	C	D
LNAV MDA	1060-1	740 (800-1)	NA	
CIRCLING	1060-1 739 (800-1)	1200-1¼ 879 (900-1¼)	NA	

MORRILTON, ARKANSAS
Orig 09015

35°08'N-92°43'W

RNAV (GPS) RWY 27

SC-1, 19 NOV 2009 to 17 DEC 2009

SC-1, 19 NOV 2009 to 17 DEC 2009