

SULPHUR, LOUISIANA

AL-6934 (FAA)

WAAS CH 99610 W33A	APP CRS 326°	Rwy Idg TDZE Apt Elev	5001 10 10
--	------------------------	-----------------------------	---------------------------------------

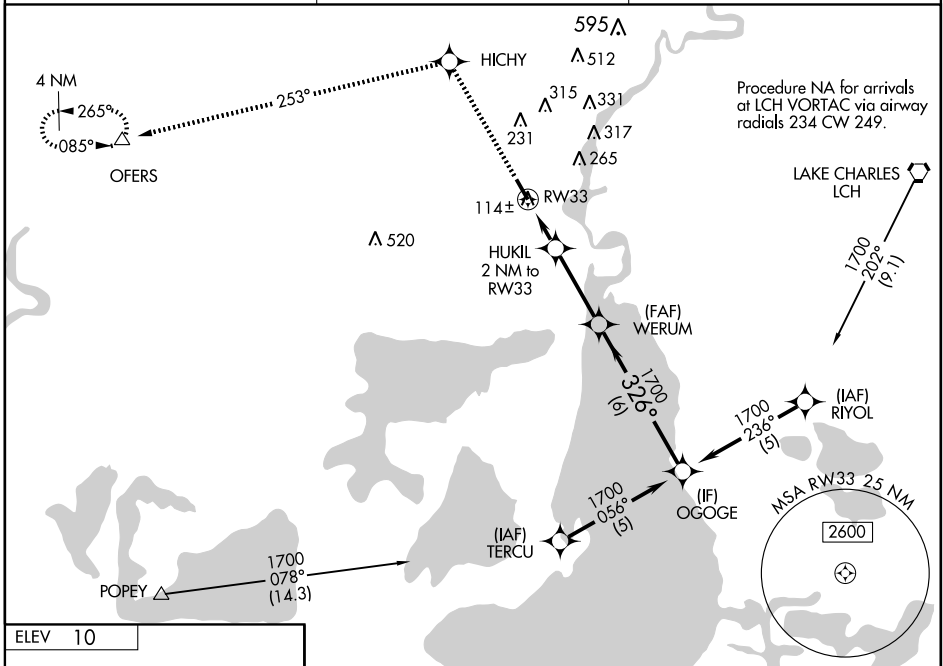
RNAV (GPS) RWY 33

SULPHUR/SOUTHLAND FIELD (U XL)

⚠ Baro-VNAV NA when using Lake Charles Rgnl altimeter setting. For uncompensated Baro-VNAV systems, LNAV/VNAV NA below -15°C (5°F) or above 49°C (120°F).
⚠ DME/DME RNP-0.3 NA. Visibility reduction by helicopters NA. When local altimeter setting not received, use Lake Charles Rgnl altimeter setting and increase all DA 19 feet, all MDA 20 feet and LNAV/VNAV visibility ¼ mile all Cats.

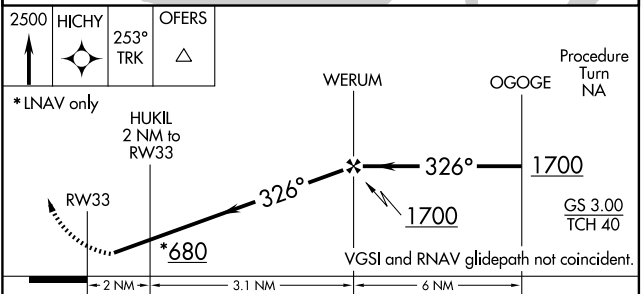
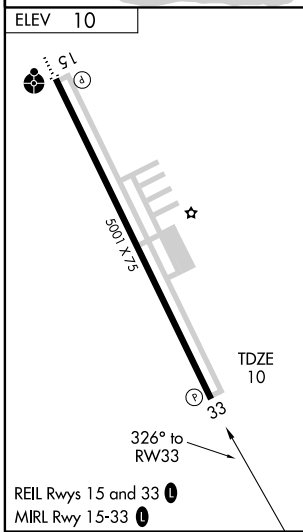
MISSED APPROACH: Climb to 2500 direct HICHY and via 253° track to OFERS and hold.

AWOS-3 118.175	LAKE CHARLES APP CON * 119.35 282.3	UNICOM 122.8 (CTAF) 0
--------------------------	---	---------------------------------



SC-4, 19 NOV 2009 to 17 DEC 2009

SC-4, 19 NOV 2009 to 17 DEC 2009



CATEGORY	A	B	C	D
LPV DA		348-1¼	338 (400-1¼)	
LNAV/VNAV DA		384-1¼	374 (400-1¼)	
LNAV MDA		380-1	370 (400-1)	380-1¼ 370 (400-1¼)
CIRCLING	420-1 410 (500-1)	520-1 510 (600-1)	520-1½ 510 (600-1½)	640-2 630 (700-2)

SULPHUR, LOUISIANA
Orig 09071

30° 08' N-93° 23' W

SULPHUR/SOUTHLAND FIELD (U XL)
RNAV (GPS) RWY 33