

| | | | |
|--|------------------------|-----------------------------|---------------------------------------|
| WAAS CH 86711 W15A | APP CRS 146° | Rwy Idg TDZE Apt Elev | 5001 10 10 |
|--|------------------------|-----------------------------|---------------------------------------|

RNAV (GPS) RWY 15

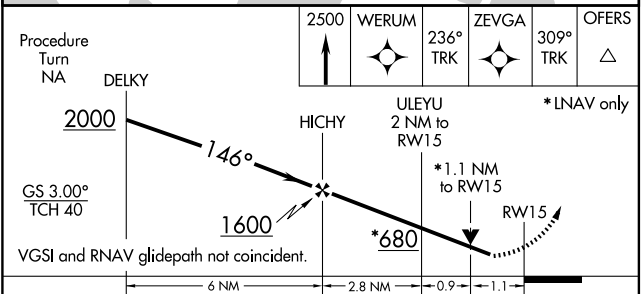
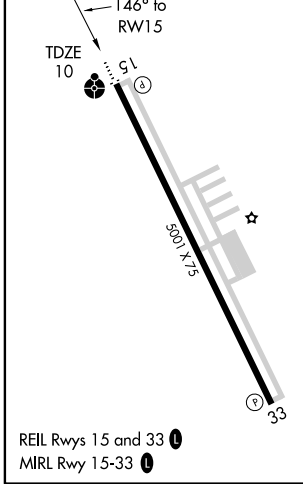
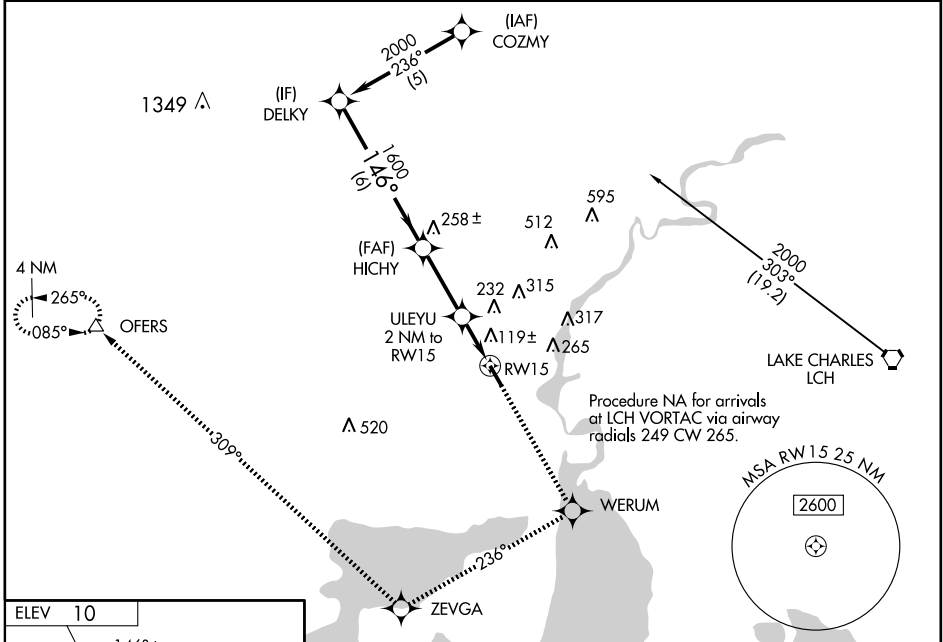
SULPHUR/SOUTHLAND FIELD (U.X.L)

⚠ Imperative table does not apply to LNAV/VNAV. Baro-VNAV NA when using Lake Charles Rgnl altimeter setting. For uncompensated Baro-VNAV systems, LNAV/VNAV NA below -15°C (5°F) or above 48°C (118°F). DME/DME RNP-0.3 NA. Visibility reduction by helicopters NA. When local altimeter setting not received, use Lake Charles Rgnl altimeter setting and increase all DA 19 feet, all MDA 20 feet and LPV visibility ½ mile all Cats. VDP NA when using Lake Charles Rgnl altimeter setting.

ODALS

MISSED APPROACH: Climb to 2500 direct WERUM and via 236° track to ZEVGA and via 309° track to OFERS and hold.

| | | |
|--------------------------|---|---------------------------------|
| AWOS-3 118.175 | LAKE CHARLES APP CON ★ 119.35 282.3 | UNICOM 122.8 (CTAF) ① |
|--------------------------|---|---------------------------------|



| Procedure Turn | 2500 | WERUM | 236° TRK | ZEVGA | 309° TRK | OFERS |
|---|--------------------------|----------------------|------------------------|----------------------|------------------------|-------|
| NA | ↑ | ✧ | ✧ | ✧ | △ | |
| DELKY | *LNAV only | | | | | |
| 2000 | HICHY ULEYU 2 NM to RW15 | | | | | |
| GS 3.00° TCH 40 | *1.1 NM to RW15 | | | | | |
| VGSi and RNAV glidepath not coincident. | RW15 | | | | | |
| | 6 NM | 2.8 NM | 0.9 | 1.1 | | |
| CATEGORY | A | B | C | D | | |
| LPV DA | 309-1 | | 299 (300-1) | | | |
| LNAV/VNAV DA | 419-1½ | | 409 (500-1½) | | | |
| LNAV MDA | 380-¾ | | 370 (400-¾) | | 380-1¼ 370 (400-1¼) | |
| CIRCLING | 420-1 410 (500-1) | 520-1 510 (600-1) | 520-1½ 510 (600-1½) | 640-2 630 (700-2) | | |

SC-4, 19 NOV 2009 to 17 DEC 2009

SC-4, 19 NOV 2009 to 17 DEC 2009