

09295

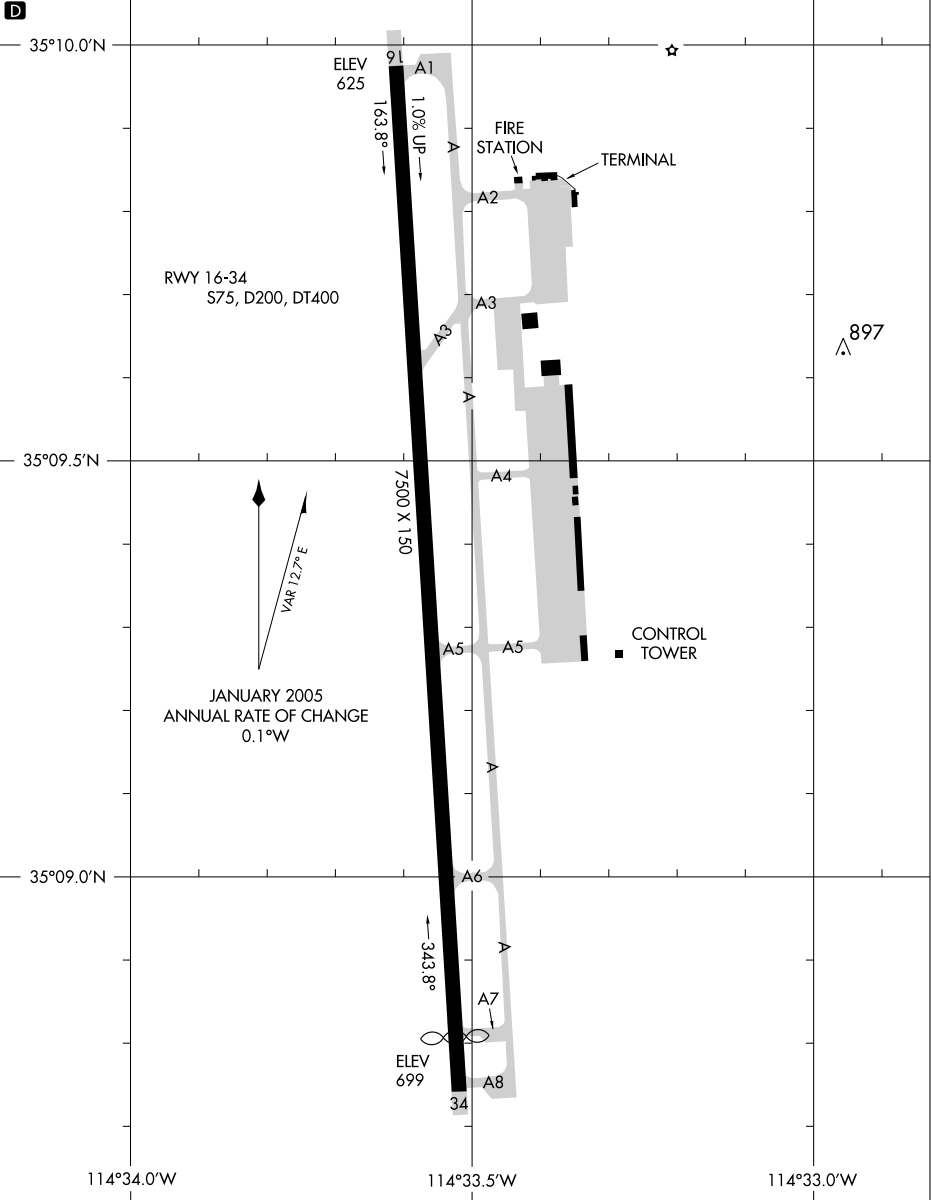
# AIRPORT DIAGRAM

BULLHEAD CITY/ LAUGHLIN/ BULLHEAD INTL (IFP)  
AL-6967 (FAA)  
BULLHEAD CITY, ARIZONA

AWOS-3  
119.825  
BULLHEAD TOWER ★  
123.9  
GND CON  
118.25

FIELD  
ELEV  
701

CAUTION: BE ALERT TO RUNWAY CROSSING CLEARANCES.  
READBACK OF ALL RUNWAY HOLDING INSTRUCTIONS IS REQUIRED.



SW-4, 19 NOV 2009 to 17 DEC 2009

SW-4, 19 NOV 2009 to 17 DEC 2009

# AIRPORT DIAGRAM

09295

BULLHEAD CITY, ARIZONA  
BULLHEAD CITY/ LAUGHLIN/ BULLHEAD INTL (IFP)