

RNAV (GPS) RWY 16

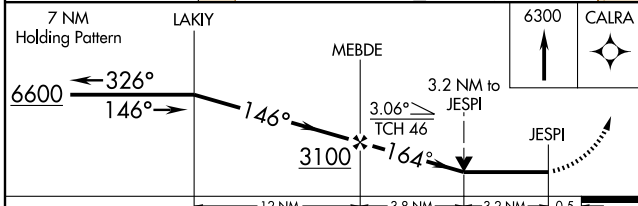
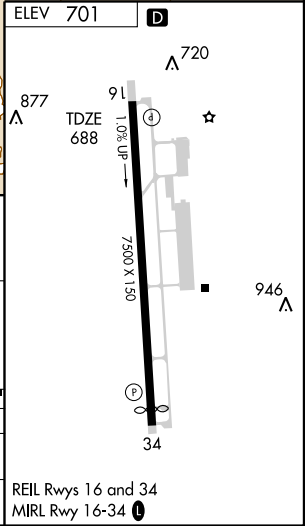
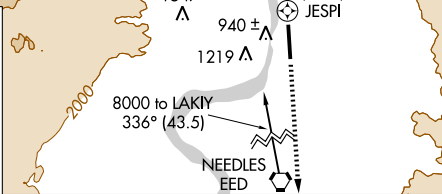
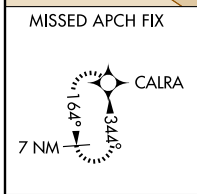
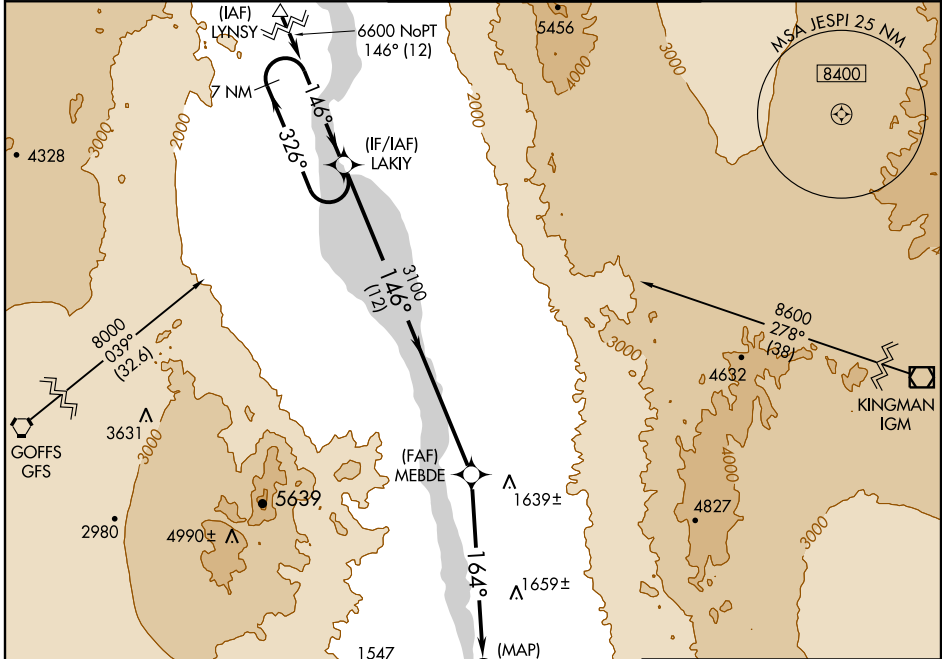
BULLHEAD CITY/LAUGHLIN/BULLHEAD INTL (IFP)

APP CRS 164°	Rwy Idg 7500
	TDZE 688
	Apt Elev 701

⚠ DME/DME RNP-0.3 NA. Procedure NA at night. Visibility reduction by helicopters NA. When local altimeter setting not received, use Needles altimeter setting and increase all MDA 100 feet.

⚠ MISSED APPROACH: Climb to 6300 direct CALRA and hold, continue climb-in-hold to 6300.

AWOS-3 119.825	LOS ANGELES CENTER 134.65 360.65	LAUGHLIN/BULLHEAD TOWER* 123.9 (CTAF) 0	GND CON 118.25
-------------------	--	---	--------------------------



CATEGORY	A	B	C	D
LNAV MDA	1840-1¼ 1152 (1200-1¼)	1840-1½ 1152 (1200-1½)	1840-3	1152 (1200-3)
CIRCLING	1840-1¼ 1139 (1200-1¼)	1840-1½ 1139 (1200-1½)	1840-3	1139 (1200-3)

REIL Rwy 16 and 34
MIRL Rwy 16-34

SW-4, 11 MAR 2010 to 08 APR 2010

SW-4, 11 MAR 2010 to 08 APR 2010