

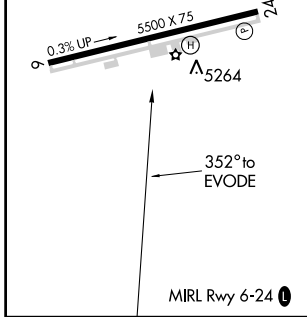
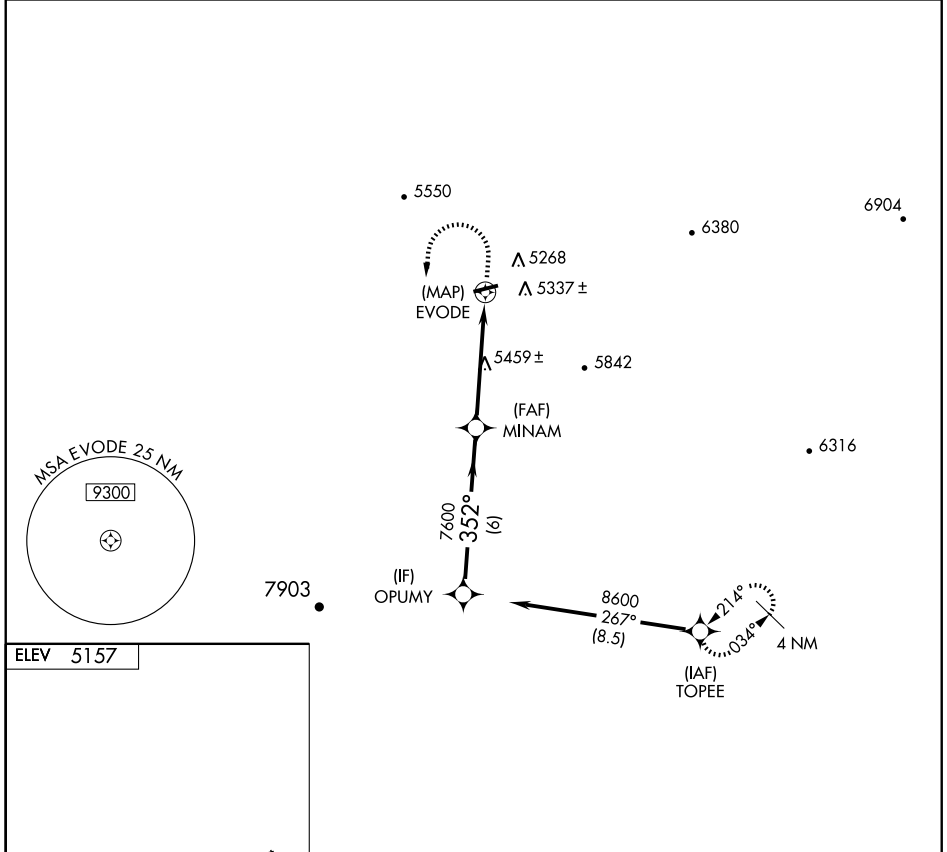
RNAV (GPS)-A

PAYSON (P.AN)

APP CRS 352°	Rwy Idg TDZE Apt Elev	N/A N/A 5157
------------------------	-----------------------------	---

NA GPS or RNP-0.3 required. DME/DME RNP-0.3 NA. MISSED APPROACH: Climb to 6700 then climbing left turn to 9000 direct OPUMY WP and via 087° track to TOPEE WP and hold.

AWOS-3 119.325	ALBUQUERQUE CENTER 132.9 239.05	UNICOM 122.8 (CTAF)
--------------------------	---	-------------------------------



OPUMY	6700	9000	OPUMY	087° track	TOPEE
8600	352°	MINAM	7600	EVODE	
Procedure Turn NA	6 NM	4.9 NM			
CATEGORY	A	B	C	D	
CIRCLING	5720-1	563 (600-1)	5760-1¾ 603 (700-1¾)	5760-2 603 (700-2)	

SW-4, 19 NOV 2009 to 17 DEC 2009

SW-4, 19 NOV 2009 to 17 DEC 2009