

(BLD1.BLD) 08045

SL-6970 (FAA)

LAS VEGAS/NORTH LAS VEGAS (VGT)
LAS VEGAS, NEVADA

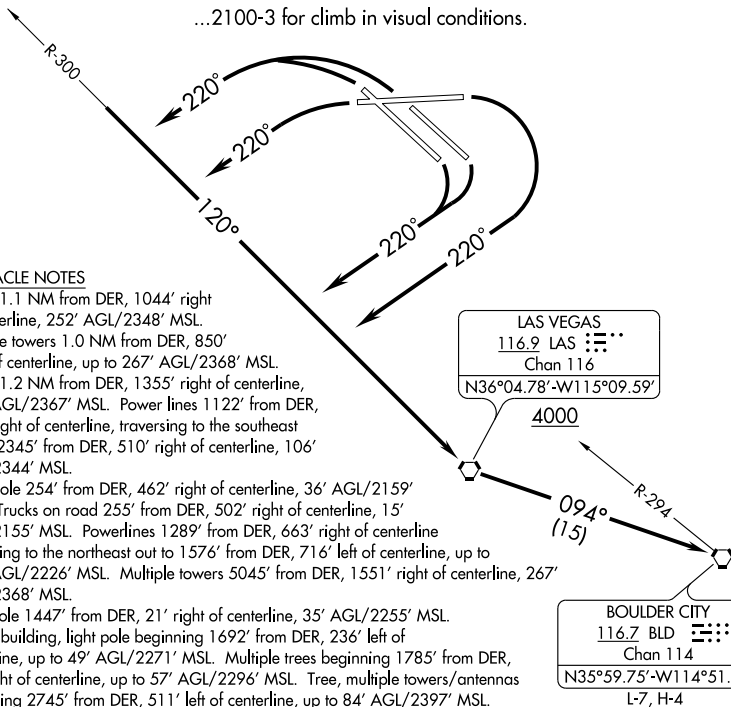
BOULDER CITY ONE DEPARTURE (OBSTACLE)

ATIS 118.05
GND CON 121.7
UNICOM 122.95
CTAF 125.7

TAKE-OFF MINIMUMS

Rwy 7: Standard with minimum climb of 339' per NM to 3600 or...
Rwy 12L: Standard with minimum climb of 393' per NM to 3600 or...
Rwy 12R: Standard with minimum climb of 373' per NM to 3600 or...
Rwy 25: Standard with minimum climb of 257' per NM to 4500 or...
Rwy 30R: Standard with minimum climb of 354' per NM to 4700 or...
Rwy 30L: Standard with minimum climb of 367' per NM to 4700 or...

...2100-3 for climb in visual conditions.



TAKE-OFF OBSTACLE NOTES

- Rwy 7: Tower 1.1 NM from DER, 1044' right of centerline, 252' AGL/2348' MSL.
- Rwy 12R: Multiple towers 1.0 NM from DER, 850' right of centerline, up to 267' AGL/2368' MSL. Tower 1.2 NM from DER, 1355' right of centerline, 270' AGL/2367' MSL. Power lines 1122' from DER, 764' right of centerline, traversing to the southeast out to 2345' from DER, 510' right of centerline, 106' AGL/2344' MSL.
- Rwy 12L: Light pole 254' from DER, 462' right of centerline, 36' AGL/2159' MSL. Trucks on road 255' from DER, 502' right of centerline, 15' AGL/2155' MSL. Powerlines 1289' from DER, 663' right of centerline traversing to the northeast out to 1576' from DER, 716' left of centerline, up to 129' AGL/2226' MSL. Multiple towers 5045' from DER, 1551' right of centerline, 267' AGL/2368' MSL.
- Rwy 25: Light pole 1447' from DER, 21' right of centerline, 35' AGL/2255' MSL.
- Rwy 30L: Signs, building, light pole beginning 1692' from DER, 236' left of centerline, up to 49' AGL/2271' MSL. Multiple trees beginning 1785' from DER, 78' right of centerline, up to 57' AGL/2296' MSL. Tree, multiple towers/antennas beginning 2745' from DER, 511' left of centerline, up to 84' AGL/2397' MSL.
- Rwy 30R: Antenna tower 4639' from DER, 1736' left of centerline, 84' AGL/2327' MSL. Anemometer 552' from DER, 570' left of centerline, 34' AGL/2216' MSL. Vent on building 1632' from DER, 566' right of centerline, 58' AGL/2240' MSL. Antenna tower hangar 2012' from DER, 195' right of centerline, 61' AGL/2247' MSL.

NOTE: Chart not to scale.

DEPARTURE ROUTE DESCRIPTION

TAKE-OFF RUNWAYS 7, 12 L/R: Turn right.

TAKE-OFF RUNWAYS 25, 30L/R: Turn left.

All aircraft climb to 6000 via heading 220° and LAS-300 to LAS VORTAC, cross LAS VORTAC at or above 4000. Continue climb via LAS VORTAC R-094 to BLD VORTAC.

RUNWAYS 7, 12L/R, 25, 30L/R: For climb in visual conditions: cross North Las Vegas Airport at or above 4200 then via BLD VORTAC R-294 to BLD VORTAC.

BOULDER CITY ONE DEPARTURE (OBSTACLE)

(BLD1.BLD) 08045

LAS VEGAS, NEVADA
LAS VEGAS/NORTH LAS VEGAS (VGT)

SW-4, 19 NOV 2009 to 17 DEC 2009

SW-4, 19 NOV 2009 to 17 DEC 2009