

LAS VEGAS, NEVADA

AL-6970 (FAA)

# ILS or LOC RWY 12L

LAS VEGAS/NORTH LAS VEGAS (VGT)

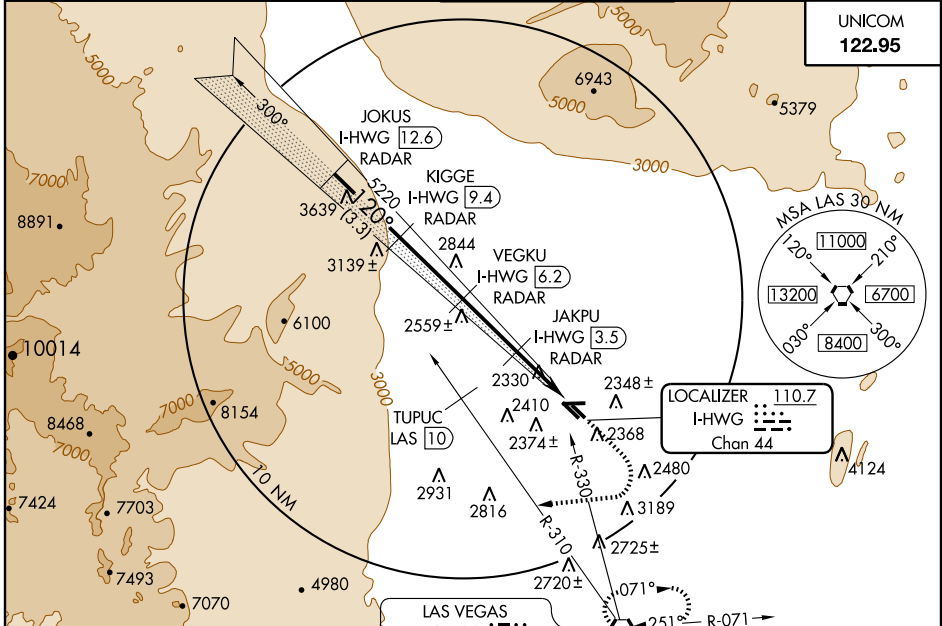
LOC/DME I-HWGW <b>110.7</b> Chan <b>44</b>	APP CRS <b>120°</b>	Rwy Idg TDZE Apt Elev	<b>4202</b> <b>2189</b> <b>2205</b>
--	------------------------	-----------------------------	---

**⚠** When local altimeter setting not received, use McCarran Intl altimeter setting and increase DA to 2478, and visibility Cats A/B ¼ mile; increase all MDA 40 feet. DME and RADAR required.

**MISSED APPROACH:** Climb to 2600, then climbing right turn heading 250° to 6000, intercept LAS R-310 outbound to TUPUC/LAS 10 DME then turn right via LAS R-330 inbound to LAS VORTAC and hold.

ATIS <b>118.05</b>	LAS VEGAS APP CON Rwy 30 <b>119.4 282.2</b>	NELLIS APP CON Rwy 12 <b>118.125 291.725</b>	NORTH LAS VEGAS TOWER* <b>125.7 (CTAF) 360.75</b>	GND CON <b>121.7</b>	CLNC DEL <b>124.0</b>
-----------------------	---	--	--	-------------------------	--------------------------

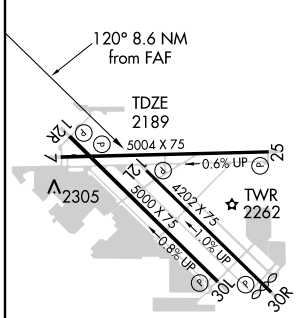
UNICOM  
**122.95**



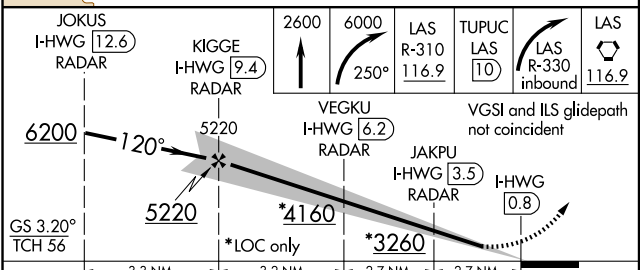
SW-4, 11 MAR 2010 to 08 APR 2010

SW-4, 11 MAR 2010 to 08 APR 2010

ELEV 2205



## DME and RADAR REQUIRED



CATEGORY	A	B	C	D
S-ILS 12L	2456-1	267 (300-1)		NA
S-LOC 12L	2580-1	391 (400-1)		NA
CIRCLING	2680-1	475 (500-1)		NA

MIRL Rwys 7-25, 12R-30L and 12L-30R

FAF to MAP 8.6 NM

Knots	60	90	120	150	180
Min:Sec	8:36	5:44	4:18	3:26	2:52

LAS VEGAS, NEVADA  
Orig-B 09351

36°13'N-115°12'W

# ILS or LOC RWY 12L

LAS VEGAS/NORTH LAS VEGAS (VGT)