

MILTON, WEST VIRGINIA

AL-6971 (FAA)

VOR-A

MILTON/ONA AIRPARK (12V)

VORTAC HVQ 117.4 Chan 121	APP CRS 288°	Rwy Idg TDZE Apt Elev 572	N/A N/A 572
---	------------------------	---	--------------------------

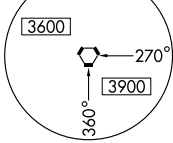
Use Huntington altimeter setting.
Circling not authorized Northwest of Rwy 7-25.
Procedure not authorized at night.

MISSED APPROACH: Climbing left turn to
3100 via HNN R-204 to HAITI Int and hold.

CHARLESTON APP CON
124.1 269.125

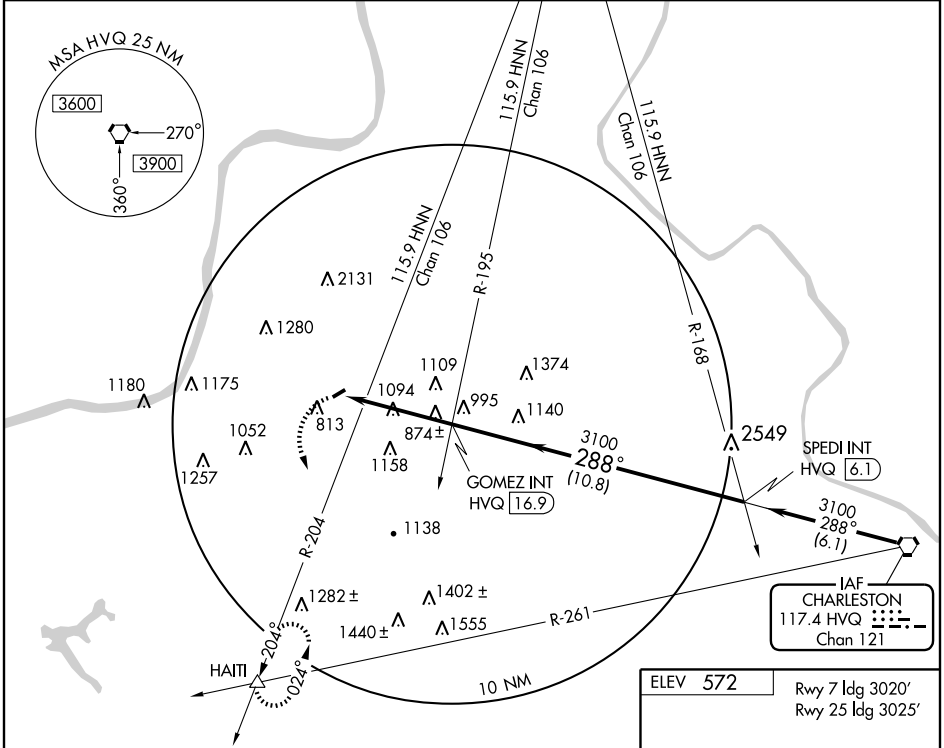
UNICOM
122.8 (CTAF)

MSA HVQ 25 NM



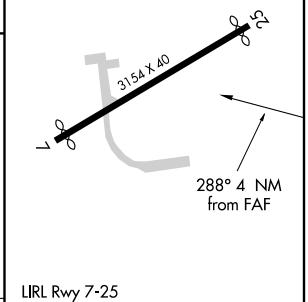
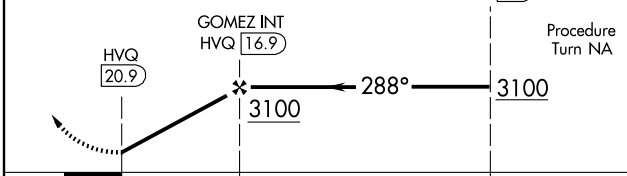
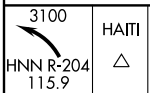
NE-4, 19 NOV 2009 to 17 DEC 2009

NE-4, 19 NOV 2009 to 17 DEC 2009



IAF
CHARLESTON
117.4 HVQ
Chan 121

ELEV 572 Rwy 7 Idg 3020'
Rwy 25 Idg 3025'



CATEGORY	A	B	C	D
CIRCLING	1500-1¼ 928 (1000-1¼)		NA	

FAF to MAP 4 NM					
Knots	60	90	120	150	180
Min:Sec	4:00	2:40	2:00	1:36	1:20

MILTON, WEST VIRGINIA
Amdt 2 07130

38°26'N - 82°12'W

MILTON/ONA AIRPARK (12V)

VOR-A