

JOHNSTOWN, NEW YORK

AL-6987 (FAA)

NDB RWY 10

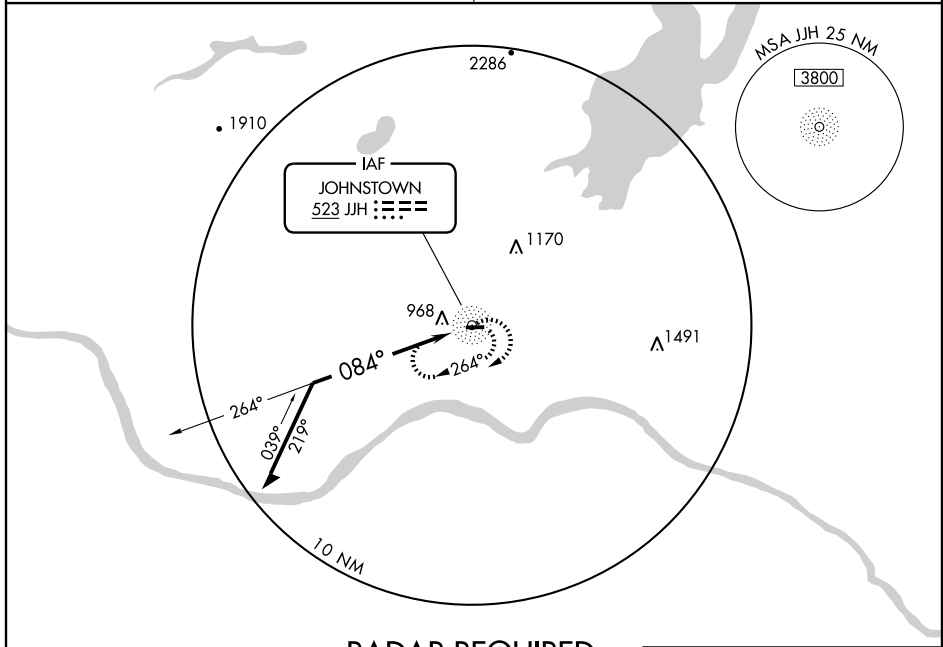
JOHNSTOWN/ FULTON COUNTY (NY)

NDB JZH 523	APP CRS 084°	Rwy Idg 4000
		TDZE 881
		Apt Elev 881

▼ Use Schenectady County altimeter setting; **▲** NA when not received, use Albany Intl altimeter setting.

MISSED APPROACH: Climbing right turn to 3000 in JZH holding pattern.

ALBANY APP CON **118.05** UNICOM **122.7 (CTAF)**

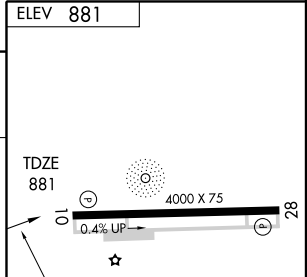
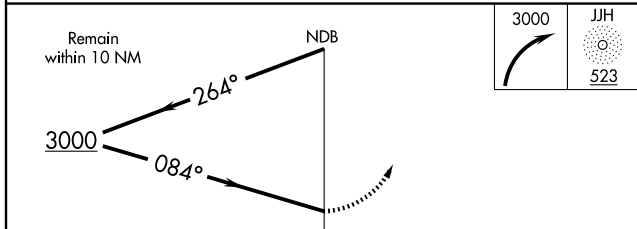


NE-2, 11 MAR 2010 to 08 APR 2010

NE-2, 11 MAR 2010 to 08 APR 2010

RADAR REQUIRED

▲ 2420



CATEGORY	A	B	C	D
S-10	1900-1¼ 1019 (1100-1¼)	1900-1½ 1019 (1100-1½)		NA
CIRCLING	1900-1¼ 1019 (1100-1¼)	1900-1½ 1019 (1100-1½)		NA
ALBANY INTL ALTIMETER SETTING MINIMUMS				
S-10	1940-1¼ 1059 (1100-1¼)	1940-1½ 1059 (1100-1½)		NA
CIRCLING	1940-1¼ 1059 (1100-1¼)	1940-1½ 1059 (1100-1½)		NA

ELEV 881

TDZE 881

0.4 UP

084° to NDB

MIRL Rwy 10-28

REIL Rws 10 and 28

JOHNSTOWN, NEW YORK
Amdt 1A 08241

43°00'N - 74°20'W

JOHNSTOWN/ FULTON COUNTY (NY)
NDB RWY 10