

# RNAV (GPS) RWY 21

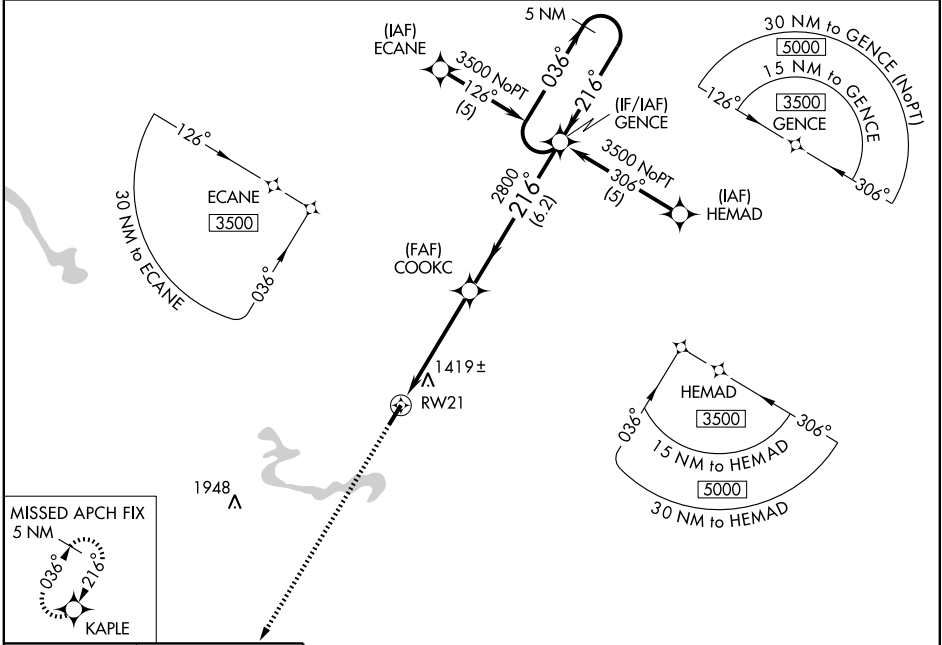
PRESTONSBURG/BIG SANDY RGNL (K22)

WAAS CH <b>77801</b> <b>W21A</b>	APP CRS <b>216°</b>	Rwy Idg TDZE <b>1221</b> Apt Elev <b>1221</b>	<b>5000</b>
--	------------------------	---	-------------

**▼** For uncompensated Baro-VNAV systems, LNAV/VNAV NA below -17°C (2°F) or above 46°C (115°F).  
**▲** DME/DME RNP-0.3 NA. If local altimeter setting not received, use Pikeville altimeter setting and increase LPV DA to 1534 feet; LNAV/VNAV DA to 1802 feet and all MDAs 80 feet.  
 Baro-VNAV and VDP NA when using Pikeville altimeter setting.

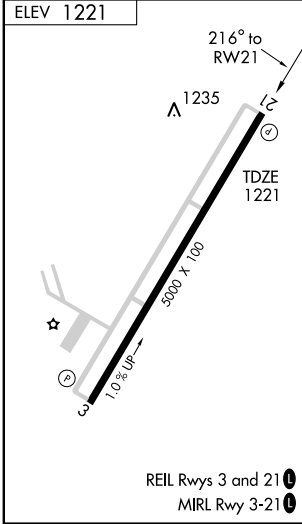
**MISSED APPROACH:**  
Climb to 3700 direct KAPLE and hold.

AWOS-3 <b>120.175</b>	HUNTINGTON APP CON <b>119.75 270.1</b>	UNICOM <b>123.05 (CTAF) 0</b>
--------------------------	---	----------------------------------



SE-1, 19 NOV 2009 to 17 DEC 2009

SE-1, 19 NOV 2009 to 17 DEC 2009



 3700 KAPLE *LNAV Only.	VGSi and RNAV glidepath not coincident.			
	COOKC			5 NM Holding Pattern
RWY 21		GENCE		3500
*1.4 NM to RWY 21		216°		036°
1.4		3.4 NM		6.2 NM
2800		216°		3500
GS 3.00° TCH 40				
CATEGORY	A	B	C	D
LPV DA	1471-1 250 (300-1)			
LNAV/VNAV DA	1739-1¾ 518 (600-1¾)			
LNAV MDA	1680-1	459 (500-1)	1680-1½ 459 (500-1½)	1680-1½ 459 (500-1½)
CIRCLING	1840-1	619 (700-1)	1840-1¾ 619 (700-1¾)	1840-2 619 (700-2)