

# RNAV (GPS) RWY 3

PRESTONSBURG/ BIG SANDY RGNL (K22)

APP CRS	Rwy Idg	<b>5000</b>
<b>036°</b>	TDZE	<b>1210</b>
	Apt Elev	<b>1221</b>

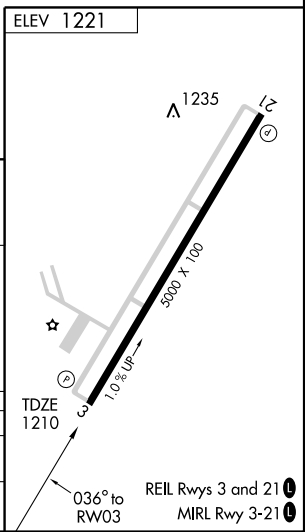
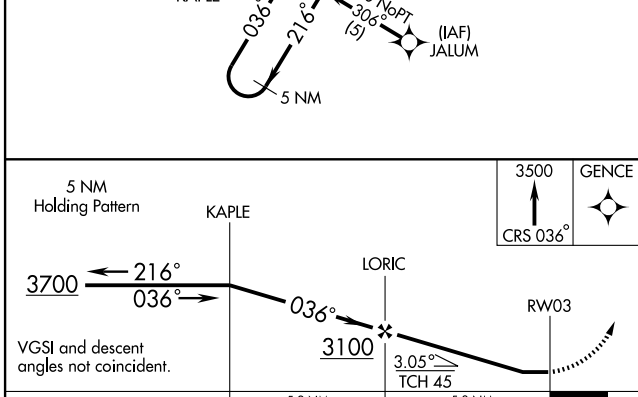
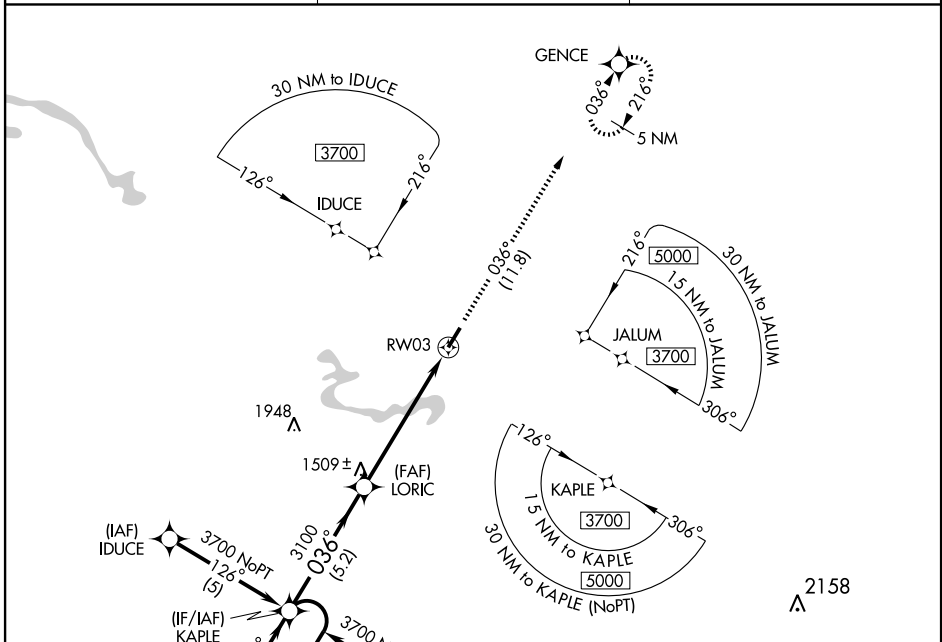
**GPS or RNP-0.3 Required.**  
**DME/DME RNP-0.3 NA.**

**MISSED APPROACH:** Climb to 3500 via 036° course to GENGE WP and hold.

AWOS-3  
**120.175**

HUNTINGTON APP CON  
**119.75 270.1**

HUNICOM  
**123.05 (CTAF) 0**



CATEGORY	A	B	C	D
LNVA MDA	1680-1	470 (500-1)	1680-1¼ 470 (500-1¼)	1680-1½ 470 (500-1½)
CIRCLING	1840-1	619 (700-1)	1840-1¾ 619 (700-1¾)	1840-2 619 (700-2)

SE-1, 19 NOV 2009 to 17 DEC 2009

SE-1, 19 NOV 2009 to 17 DEC 2009