

SANTA TERESA, NEW MEXICO

AL-9068 (FAA)

RNAV (GPS) RWY 10

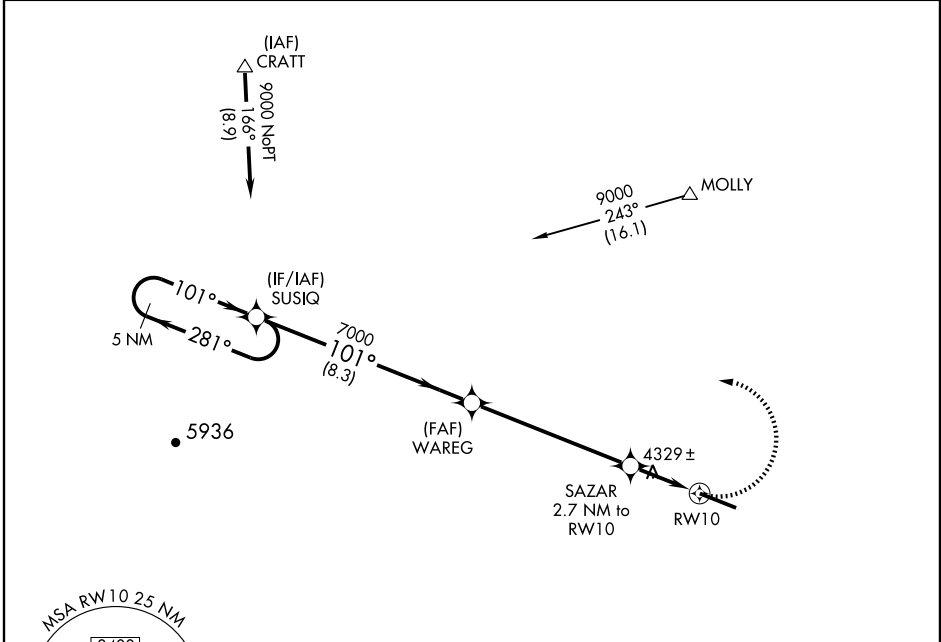
SANTA TERESA/DONA ANA COUNTY AT SANTA TERESA (5T6)

APP CRS	Rwy Idg	8500
101°	TDZE	4111
	Apt Elev	4112

NA DME/DME RNP-0.3 NA. MISSED APPROACH: Climbing left turn to 9000 direct SUSIQ and hold.

Use El Paso Intl altimeter setting; if not received, procedure NA.

AWOS-A 122.725	ALBUQUERQUE CENTER 128.2 285.5	UNICOM 122.725 (CTAF)
--------------------------	--	---------------------------------



SW-1, 11 MAR 2010 to 08 APR 2010

SW-1, 11 MAR 2010 to 08 APR 2010

				<p>9000</p> <p>SUSIQ</p>
				<p>9000</p> <p>SUSIQ</p> <p>WAREG</p> <p>SAZAR 2.7 NM to RW10</p> <p>RW10</p>
CATEGORY	A	B	C	D
LNAV MDA	4700-1	589 (600-1)	4700-1½ 589 (600-1½)	4700-1¾ 589 (600-1¾)
CIRCLING	4700-1	588 (600-1)	4700-1½ 588 (600-1½)	4700-2 588 (600-2)

ELEV 4112

101° to RW10

TDZE 4111

8500 X 100

4149

4255

SANTA TERESA, NEW MEXICO
Orig-A 10042

SANTA TERESA/DONA ANA COUNTY AT SANTA TERESA (5T6)
31°53'N-106°42'W

RNAV (GPS) RWY 10