

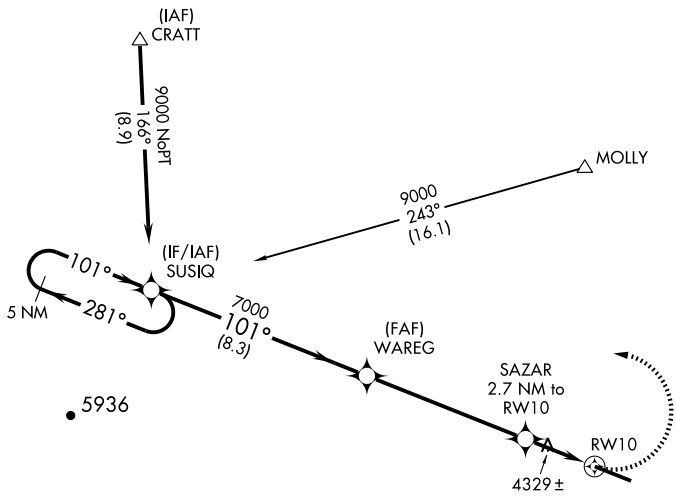
RNAV (GPS) RWY 10

SANTA TERESA/DONA ANA COUNTY AT SANTA TERESA (5T6)

APP CRS	Rwy Idg	8500
101°	TDZE	4111
	Apt Elev	4112

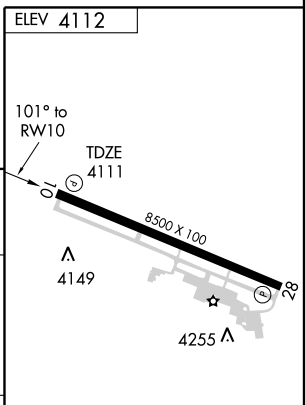
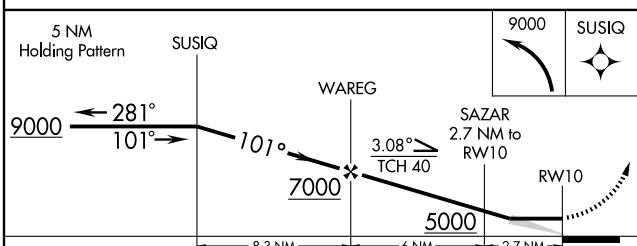
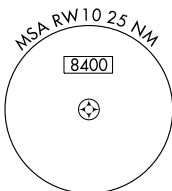
V DME/DME RNP-0.3 NA.
NA Use El Paso Intl altimeter setting; if not received, procedure NA.
 MISSED APPROACH: Climbing left turn to 9000 direct SUSIQ and hold.

ALBUQUERQUE CENTER 128.2 285.5	UNICOM 122.725 (CTAF)
--	---------------------------------



SW-1, 19 NOV 2009 to 17 DEC 2009

SW-1, 19 NOV 2009 to 17 DEC 2009



CATEGORY	A	B	C	D
LNAV MDA	4700-1	589 (600-1)	4700-1½ 589 (600-1½)	4700-1¾ 589 (600-1¾)
CIRCLING	4700-1	588 (600-1)	4700-1½ 588 (600-1½)	4700-2 588 (600-2)

REIL Rwy 10 and 28
 MRL Rwy 10-28

RNAV (GPS) RWY 10